
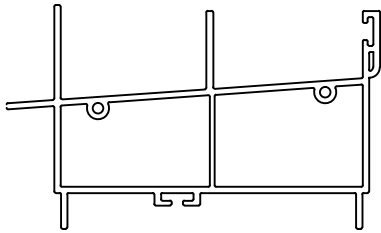


DO NOT SCALE DRAWING

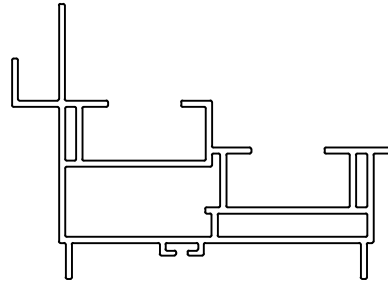
NO.	REVISION	BY	DATE

 <p>BY DDS DESIGNS</p> <p>"OUR NAME SAYS IT ALL"</p>	<p>LOCATION FOR IMPACT SPECIFICATION-LENGTHS TO 3/8"</p> <p>ALLOWABLE BOW MAX. 1" PER 14' ANGULARITY TO BE $\pm 1/2^\circ$</p> <p>1) MATERIAL <u>RIGID PVC</u> 2) CAPSTOCK 3) UNSPECIFIED WALLS 4) BREAK ALL CORNERS 5) AREA 6) WT/FT015R SQ. IN. LBS./FT.</p>	<p>TOLERANCES- .XX \pm .010 .XXX \pm .005</p> <p>TITLE SERIES DH 100 DH MECH MAIN FRAME/MECH SASH</p> <p>DWN BY DDS SCALE DATE 10/4/03 CHKD BY APPD BY</p> <p>COMPUTER NO</p> <p>DWG NO C-100 DH CROSS SECTION</p>
---	---	--

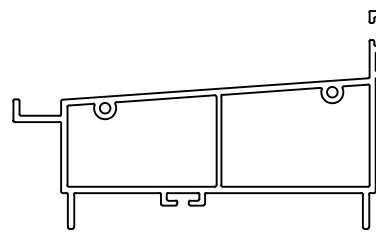
SERIES DH100-MECHANICAL MF - MECHANICAL SASH



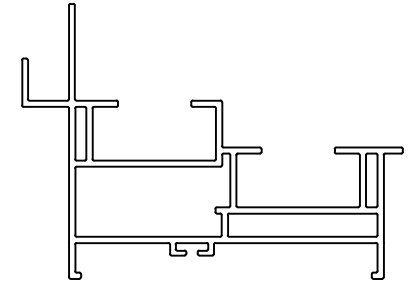
2011
MAIN FRAME-HEAD
MECHANICAL



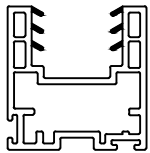
2012
MAIN FRAME-JAMB
MECHANICAL



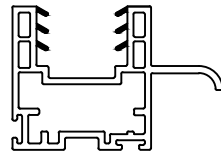
2013
MAIN FRAME-SILL
MECHANICAL



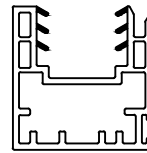
2018
MAIN FRAME-JAMB
MECHANICAL



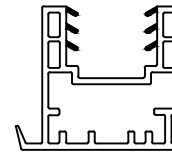
2000
PLAIN SASH
MECHANICAL



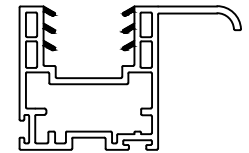
2002
HANDLE SASH
MECHANICAL




2003
INTERLOCK FEMALE
MECHANICAL

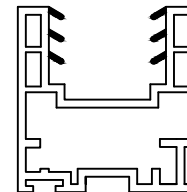
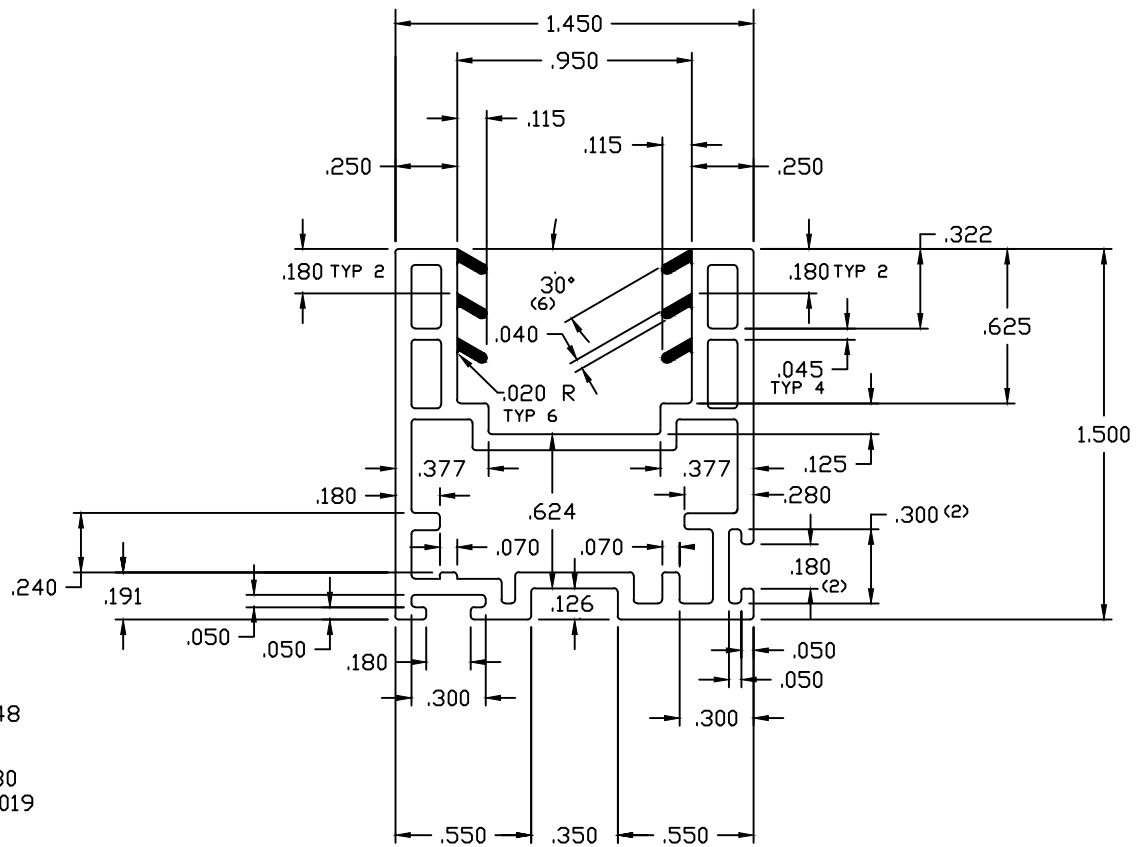


2004
INTERLOCK MALE
MECHANICAL



2008
TOP SASH PULL RAIL
MECHANICAL

DRAWN FOR  BY DDS DESIGNS "OUR NAME SAYS IT ALL"	TITLE SERIES DH100 PROFILE CHART				
	DWN BY DDS	SCALE	DATE 09-2-11	CHKD BY	APPD BY
	COMPUTER NO				
	DWG NO		C- PROFILE CHART 1		



AREA OF RIGID PVC = .553
 WT/FT OF RIGID PVC = .348

AREA OF FLEXIBLE PVC = .030
 WT/FT OF FLEXIBLE PVC = .019

NO.	REVISION	BY	DATE

LOCATION FOR IMPACT TEST
 SPECIFICATION—LENGTHS TO 3/8"

ALLOWABLE BOW MAX. 1" PER 14'
 ANGULARITY TO BE ± 1/2"



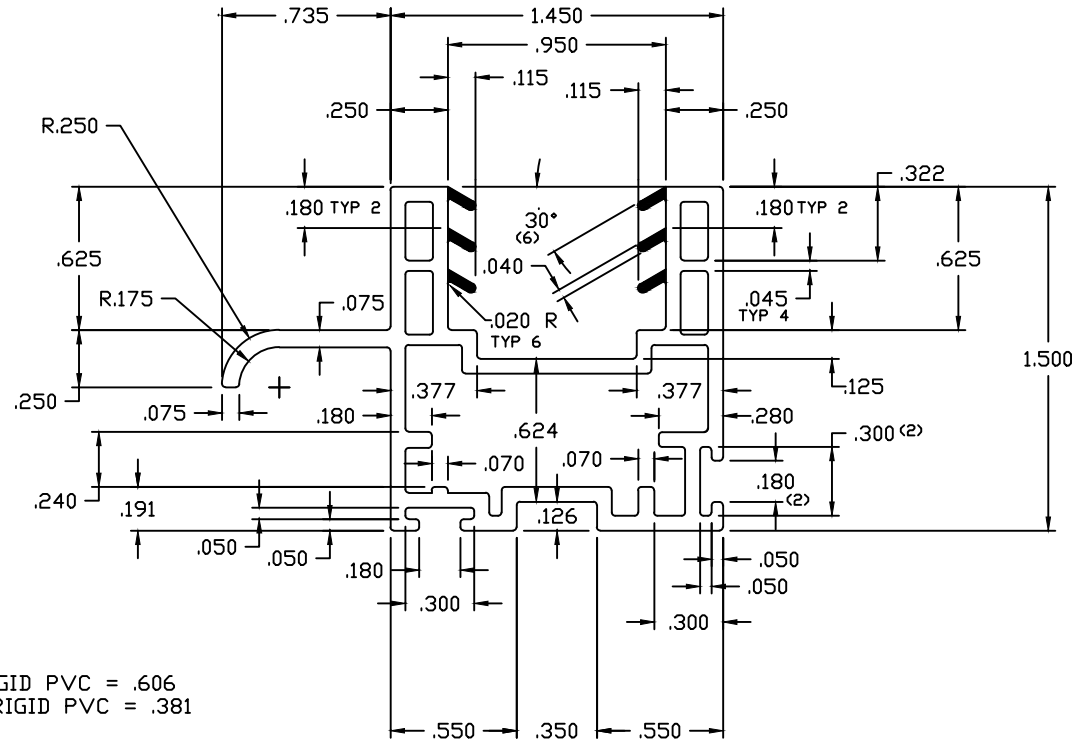
- 1) MATERIAL RIGID PVC
- 2) CAPSTOCK
- 3) UNSPECIFIED WALLS .065
- 4) BREAK ALL CORNERS .015 R
- 5) AREA .583 SQ.IN.
- 6) WT/FT LBS/FT

TITLE MECHANICAL DOUBLE HUNG
 REGULAR SASH

DWN BY DDS	SCALE FULL	DATE 11/16/02	CHKD BY	APPD BY
---------------	---------------	------------------	---------	---------

COMPUTER NO


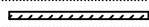
DWG NO B-DHDS-2000



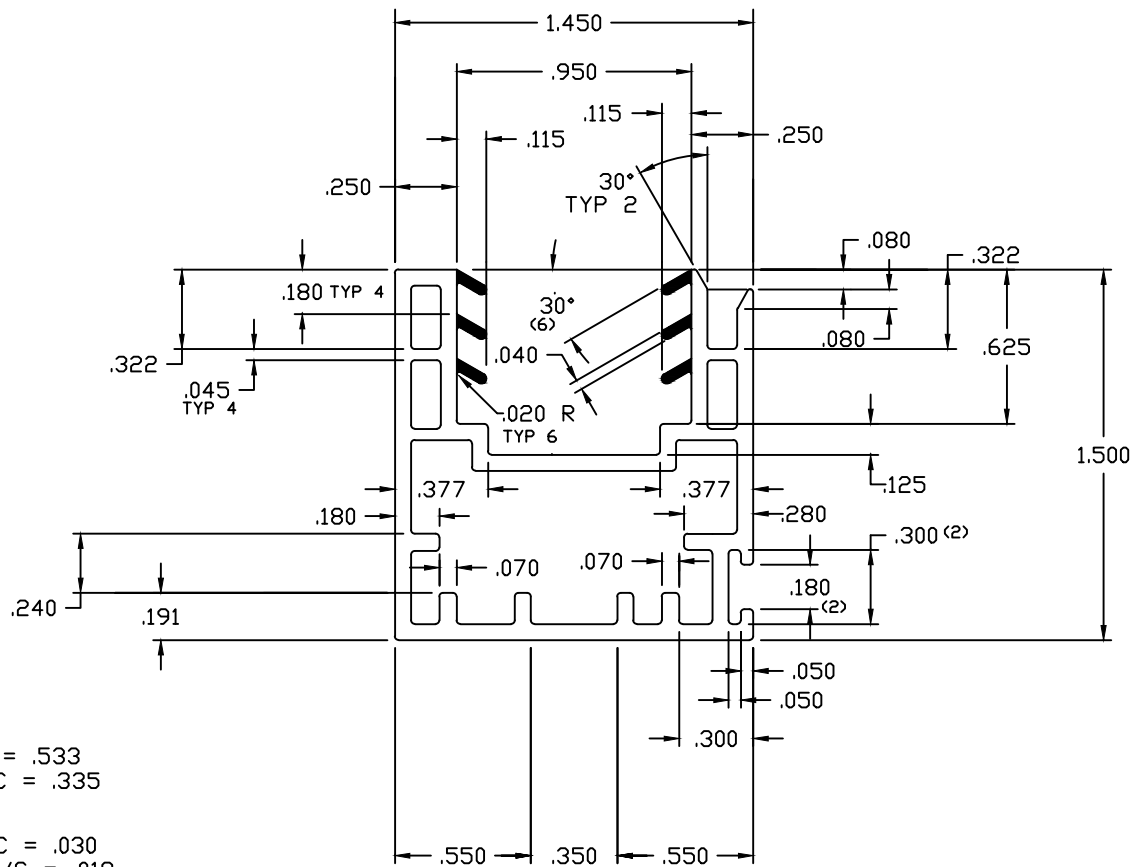
AREA OF RIGID PVC = .606
 WT/FT OF RIGID PVC = .381

AREA OF FLEXIBLE PVC = .030
 WT/FT OF FLEXIBLE PVC = .019

DO NOT SCALE DRAWING

<input checked="" type="checkbox"/> LOCATION FOR IMPACT TEST SPECIFICATION-LENGTHS TO 3/8"		ALLOWABLE BOW MAX. 1" PER 14' ANGULARITY TO BE ± 1/2°		TOLERANCES- .XX ± .010 .XXX ± .005	
DRAWN FOR  BY DDS DESIGNS "OUR NAME SAYS IT ALL"		1) MATERIAL RIGID PVC 2) CAPSTOCK  3) UNSPECIFIED WALLS .065 4) BREAK ALL CORNERS .015R 5) AREA .636 SQ. IN. 6) WT/FT _____ LBS/FT.		TITLE MECHANICAL DOUBLE HUNG HANDLE SASH DWN BY DDS SCALE FULL DATE 11/18/02 CHKD BY APPD BY COMPUTER NO DWG NO B-DHHS-2002	

NO.	REVISION	BY	DATE



AREA OF RIGID PVC = .533
 WT/FT OF RIGID PVC = .335

AREA OF FLEXIBLE PVC = .030
 WT/FT OF FLEXIBLE PVC = .019

NO.	REVISION	BY	DATE

LOCATION FOR IMPACT TEST
 SPECIFICATION—LENGTHS TO 3/8"

ALLOWABLE BOW MAX. 1" PER 14'
 ANGULARITY TO BE ± 1/2

DRAWN FOR

BY
 DDS
 DESIGNS

"OUR NAME SAYS IT ALL"

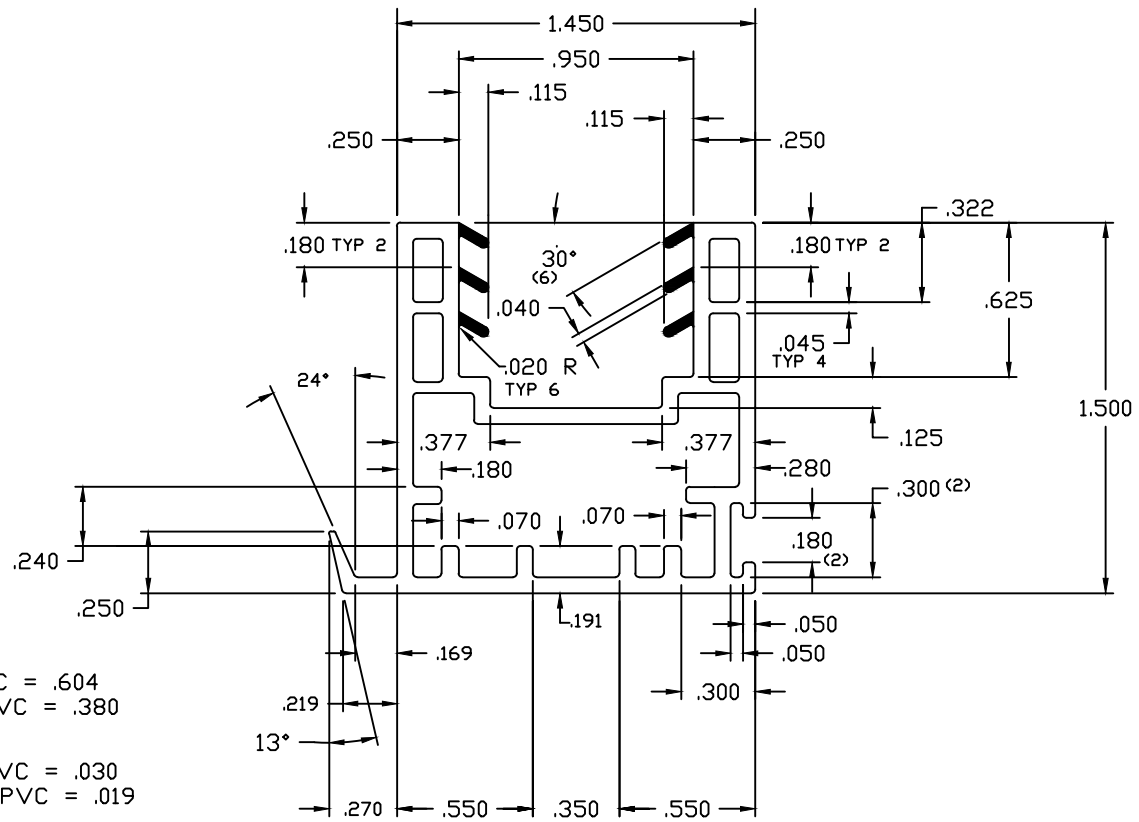
- 1) MATERIAL RIGID PVC
- 2) CAPSTOCK
- 3) UNSPECIFIED WALLS .065
- 4) BREAK ALL CORNERS .015 R
- 5) AREA .563 SQ. IN.
- 6) WT/FT LBS/FT

TITLE MECHANICAL DOUBLE HUNG
 INTERLOCK FEMAL-LOCK RAIL

DWN BY DDS	SCALE FULL	DATE 11/16/02	CHKD BY	APPD BY
---------------	---------------	------------------	---------	---------

COMPUTER NO

DWG NO B-DHIF-2003



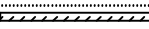


AREA OF RIGID PVC = .604
 WT/FT OF RIGID PVC = .380

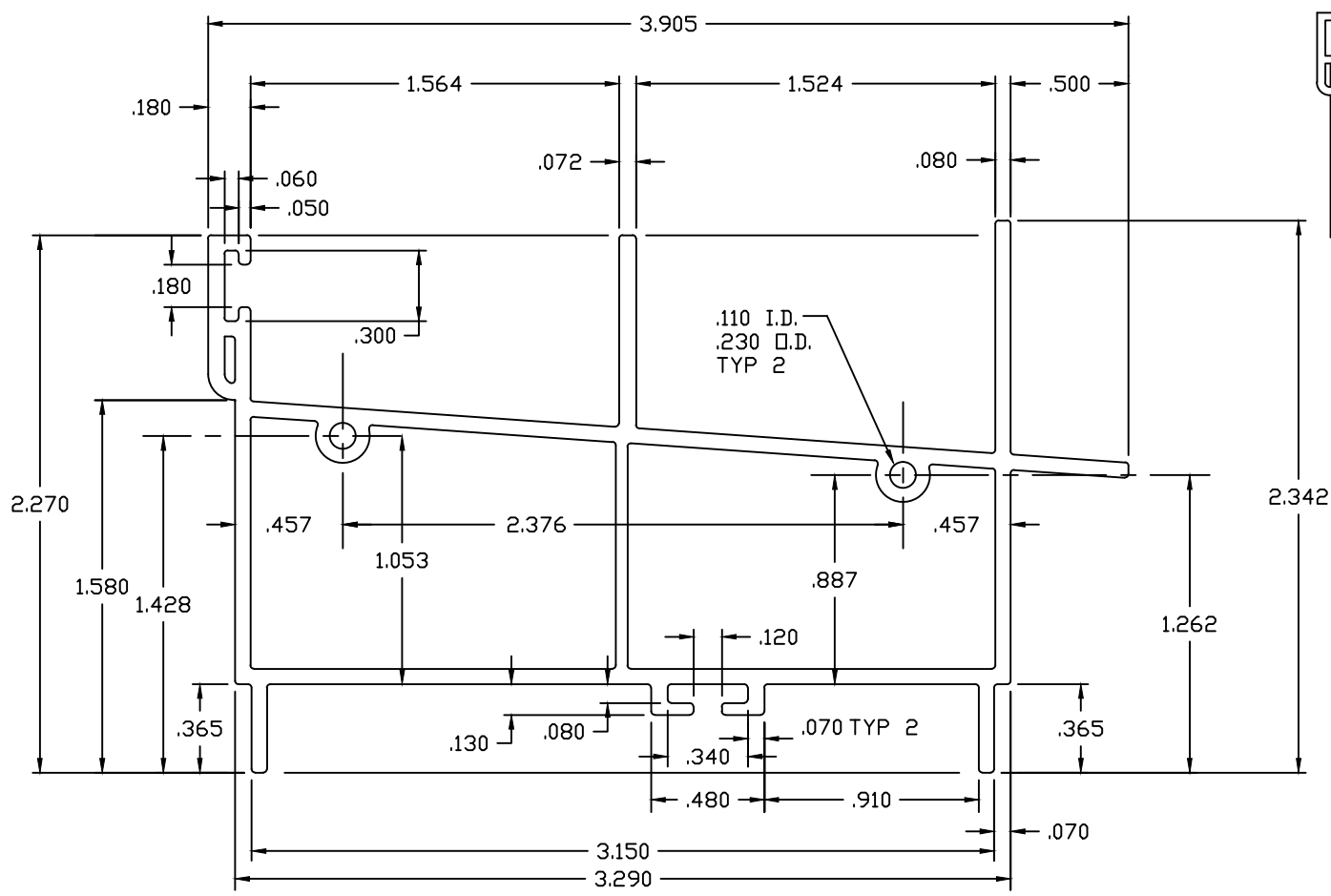
AREA OF FLEXIBLE PVC = .030
 WT/FT OF FLEXIBLE PVC = .019

DO NOT SCALE DRAWING

NO.	REVISION	BY	DATE

<input checked="" type="checkbox"/> LOCATION FOR IMPACT TEST SPECIFICATION—LENGTHS TO 3/8"		ALLOWABLE BOW MAX. 1" PER 14' ANGULARITY TO BE ± 1/2"	
DRAWN FOR  BY  DDS DESIGNS		1) MATERIAL RIGID PVC 2) CAPSTOCK  3) UNSPECIFIED WALLS .065 4) BREAK ALL CORNERS .015 R 5) AREA .634 SQ. IN. 6) WT/FT LBS/FT	
TITLE MECHANICAL DOUBLE HUNG INTERLOCK MALE-KEEPER RAIL			
DWN BY DDS	SCALE FULL	DATE 11/16/02	CHKD BY APPD BY
COMPUTER NO			
DWG NO B-DHIM-2004			

"OUR NAME SAYS IT ALL"



DO NOT SCALE DRAWING

NO.	REVISION	BY	DATE
-----	----------	----	------

☒ LOCATION FOR IMPACT TEST SPECIFICATION—LENGTHS TO 3/8"

ALLOWABLE BOW MAX. 1" PER 14' ANGULARITY TO BE ± 1/2



"OUR NAME SAYS IT ALL"

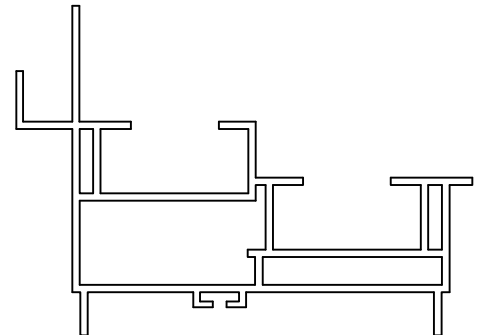
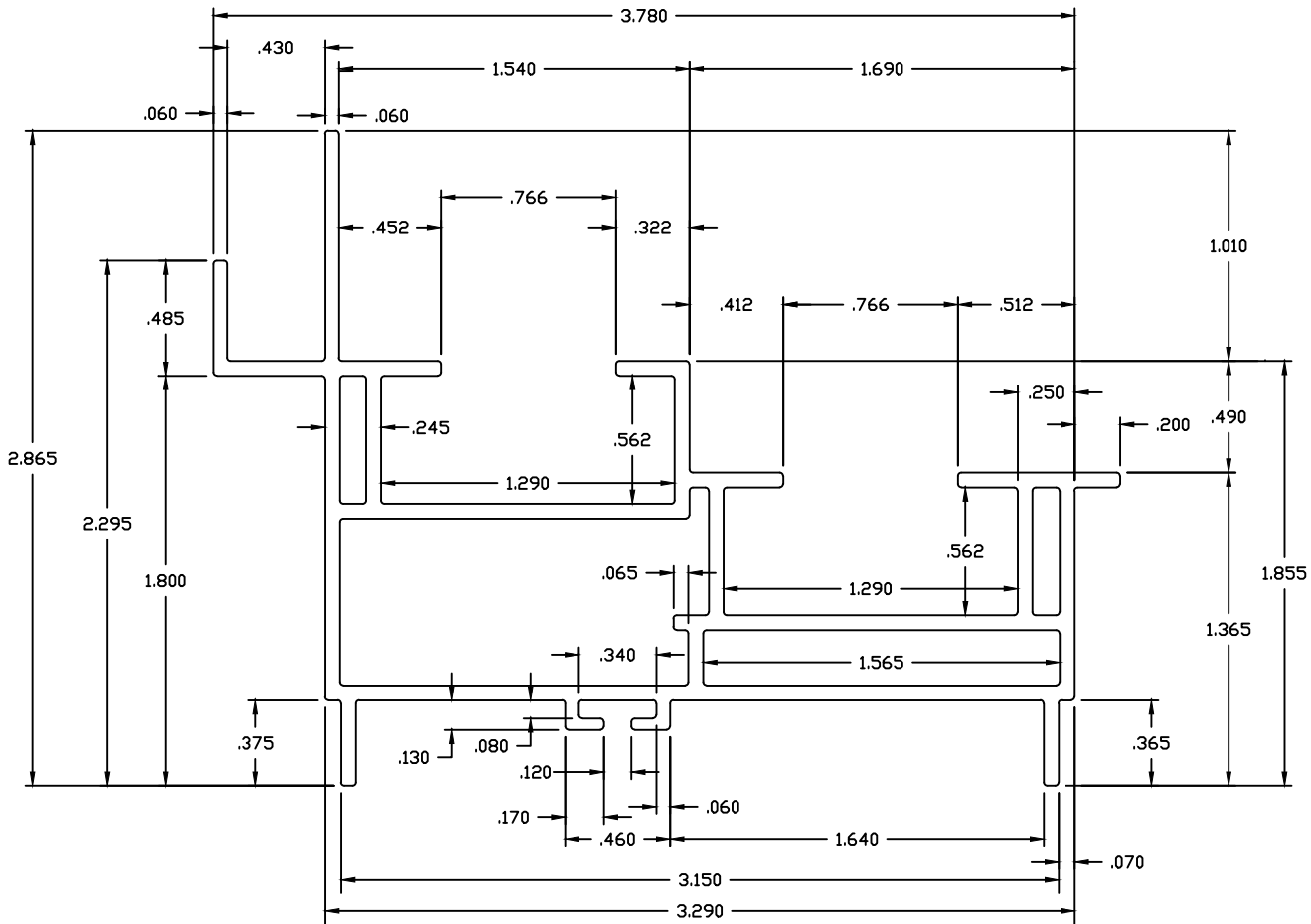
- 1) MATERIAL RIGID PVC
- 2) CAPSTOCK
- 3) UNSPECIFIED WALLS .065
- 4) BREAK ALL CORNERS .015 R
- 5) AREA .959 SQ. IN.
- 6) WT/FT LBS/FT

TITLE MECHANICAL DOUBLE HUNG MASTER HEAD


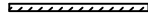
DWN BY DDS	SCALE 2:1	DATE 11/13/02	CHKD BY	APPD BY
---------------	--------------	------------------	---------	---------

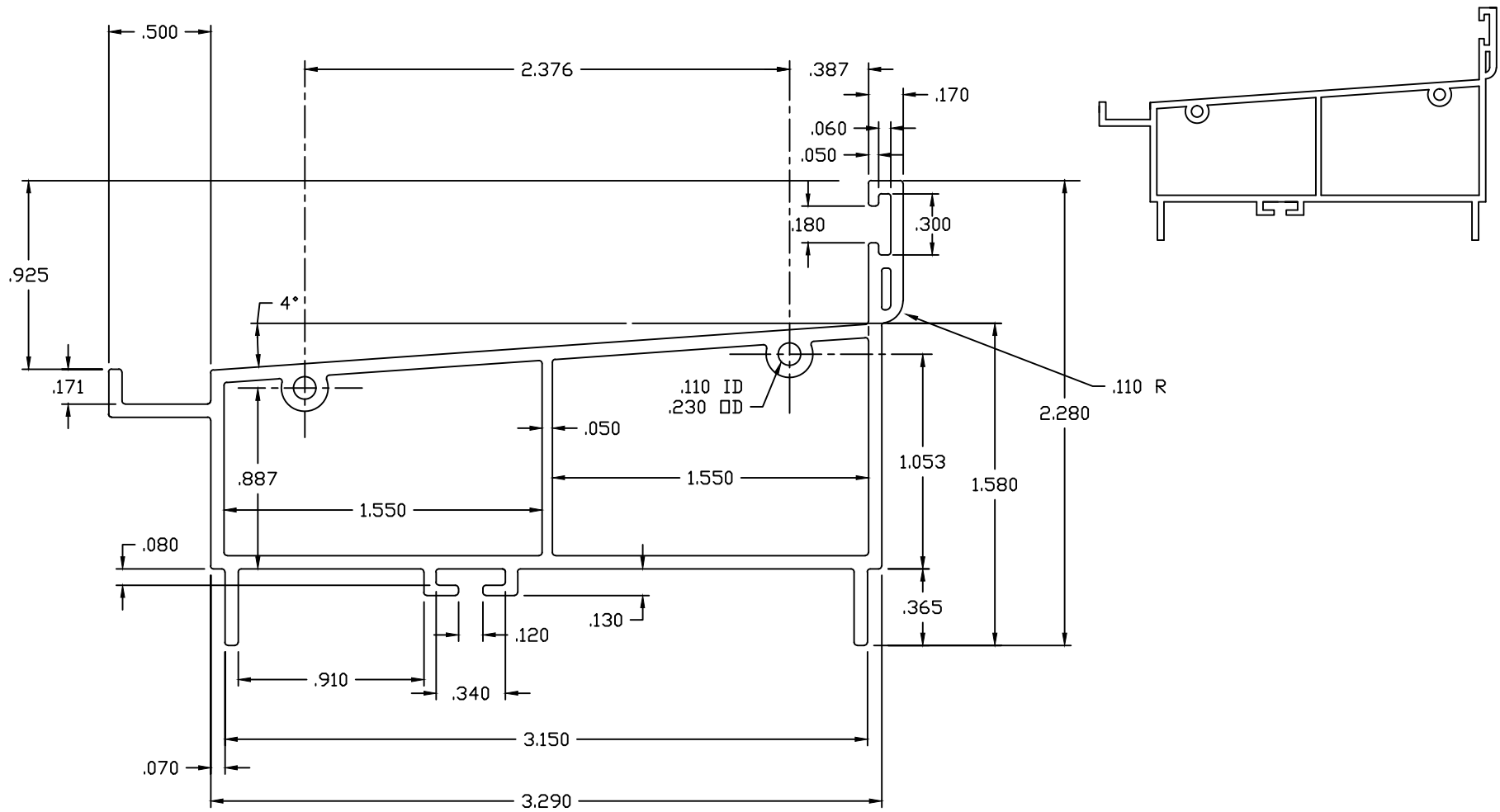
COMPUTER NO

DWG NO B-DHMH-2011



DO NOT SCALE DRAWING

<input checked="" type="checkbox"/> LOCATION FOR IMPACT TEST SPECIFICATION-LENGTHS TO 3/8"		ALLOWABLE BOW MAX. 1" PER 14' ANGULARITY TO BE ± 1/2°	TOLERANCES- .XX ± .010 .XXX ± .005
DRAWN FOR  BY DDS DESIGNS "OUR NAME SAYS IT ALL"	1) MATERIAL RIGID PVC 2) CAPSTOCK  3) UNSPECIFIED WALLS .065 4) BREAK ALL CORNERS .015R 5) AREA 1.053 SQ. IN. 6) WT/FT _____ LBS/FT	TITLE MECHANICAL DOUBLE HUNG JAMB	
NO. _____ REVISION _____ BY _____ DATE _____		DWN BY DDS SCALE 2:1 COMPUTER NO. _____	DATE 11/14/02 CHKD BY _____ APPD BY _____ DWG NO B-DHMJ-2012



DO NOT SCALE DRAWING

NO.	REVISION	BY	DATE

LOCATION FOR IMPACT TEST
SPECIFICATION-LENGTHS TO 3/8"

ALLOWABLE BOW MAX. 1" PER 14'
ANGULARITY TO BE ± 1/2

DRAWN FOR

BY
DDS
DESIGNS

"OUR NAME SAYS IT ALL"

- 1) MATERIAL RIGID PVC
- 2) CAPSTOCK
- 3) UNSPECIFIED WALLS .065
- 4) BREAK ALL CORNERS .015 R
- 5) AREA .815 SQ. IN.
- 6) WT/FT LBS/FT

TITLE MECHANICAL DOUBLE HUNG SILL				
DWN BY DDS	SCALE 2:1	DATE 11/14/02	CHKD BY	APPD BY
COMPUTER NO				
DWG NO B-DHMS-2013				