
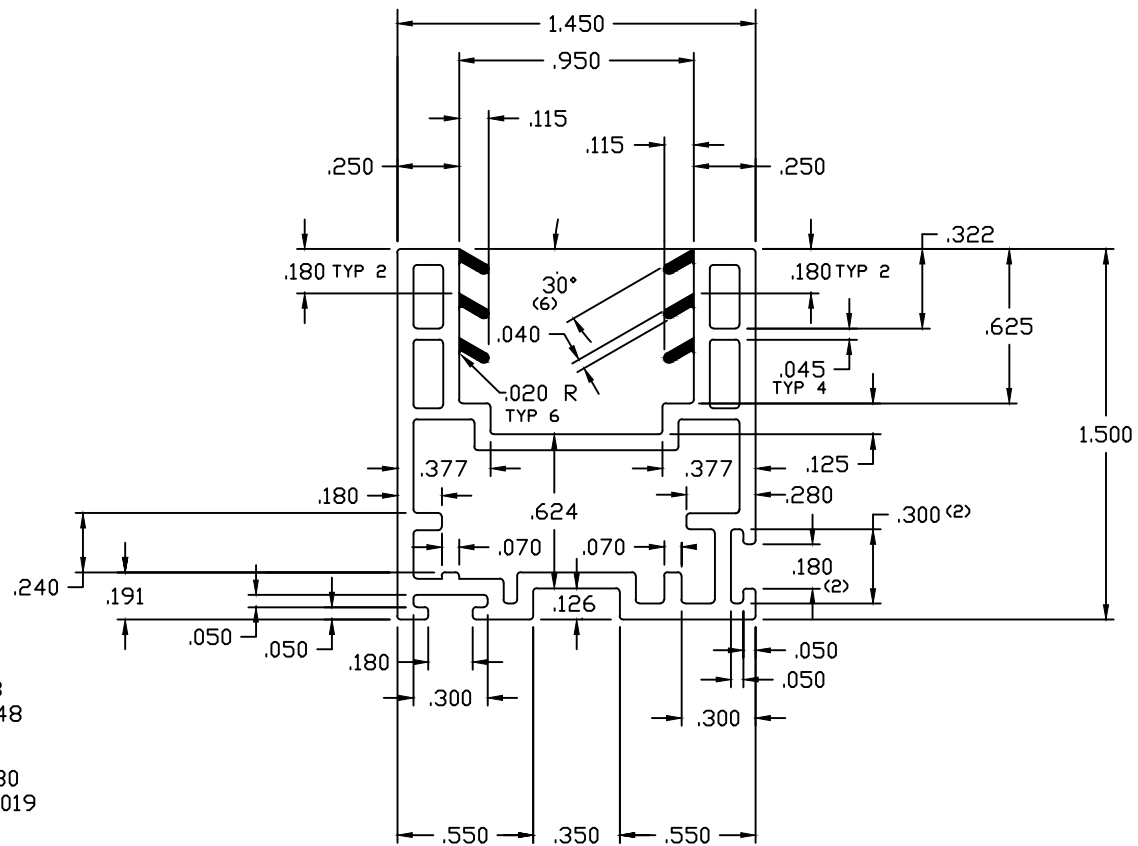


DO NOT SCALE DRAWING

NO.	REVISION	BY	DATE

 <p>BY DDS DESIGNS</p> <p>"OUR NAME SAYS IT ALL"</p>	<p>LOCATION FOR IMPACT SPECIFICATION-LENGTHS TO 3/8"</p> <p>ALLOWABLE BOW MAX. 1" PER 14' ANGULARITY TO BE ± 1/2°</p>	<p>TOLERANCES- .XX ± .010 .XXX ± .005</p> <p>TITLE SERIES DH 100 DH MECH MAIN FRAME/MECH SASH</p>
<p>1) MATERIAL <u>RIGID PVC</u></p> <p>2) CAPSTOCK <u>.....</u></p> <p>3) UNSPECIFIED WALLS <u>.015R</u></p> <p>4) BREAK ALL CORNERS <u>.....</u></p> <p>5) AREA <u>.....</u> SQ. IN.</p> <p>6) WT/FT <u>.....</u> LBS./FT.</p>	<p>DWN BY DDS</p> <p>SCALE</p> <p>DATE 10/4/03</p> <p>CHKD BY</p> <p>APPD BY</p> <p>COMPUTER NO</p> <p>DWG NO C-100 DH CROSS SECTION</p>	



AREA OF RIGID PVC = .553
 WT/FT OF RIGID PVC = .348


AREA OF FLEXIBLE PVC = .030
 WT/FT OF FLEXIBLE PVC = .019

NO.	REVISION	BY	DATE

LOCATION FOR IMPACT TEST
 SPECIFICATION—LENGTHS TO 3/8"

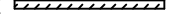
ALLOWABLE BOW MAX. 1" PER 14'
 ANGULARITY TO BE ± 1/2

DRAWN FOR



BY
 DDS
 DESIGNS

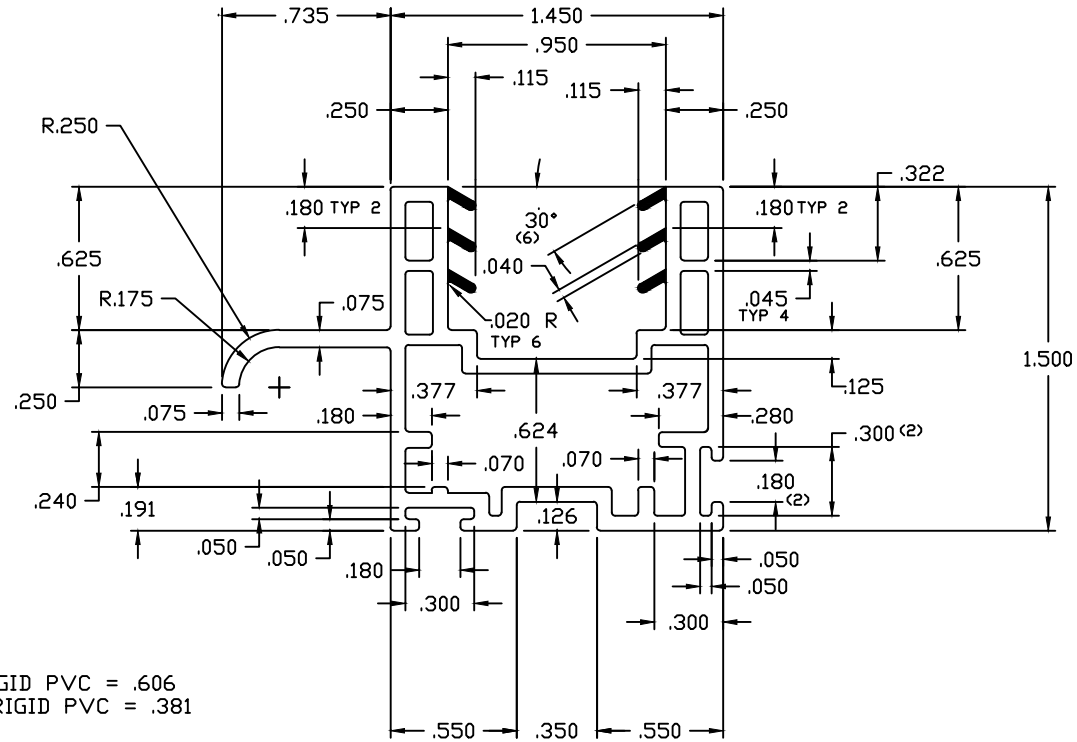
"OUR NAME SAYS IT ALL"

- MATERIAL RIGID PVC
- CAPSTOCK 
- UNSPECIFIED WALLS .065
- BREAK ALL CORNERS .015 R
- AREA .583 SQ.IN.
- WT/FT .367 LBS/FT


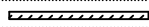
TITLE MECHANICAL DOUBLE HUNG
 REGULAR SASH

DWN BY DDS	SCALE FULL	DATE 11/16/02	CHKD BY	APPD BY
COMPUTER NO				

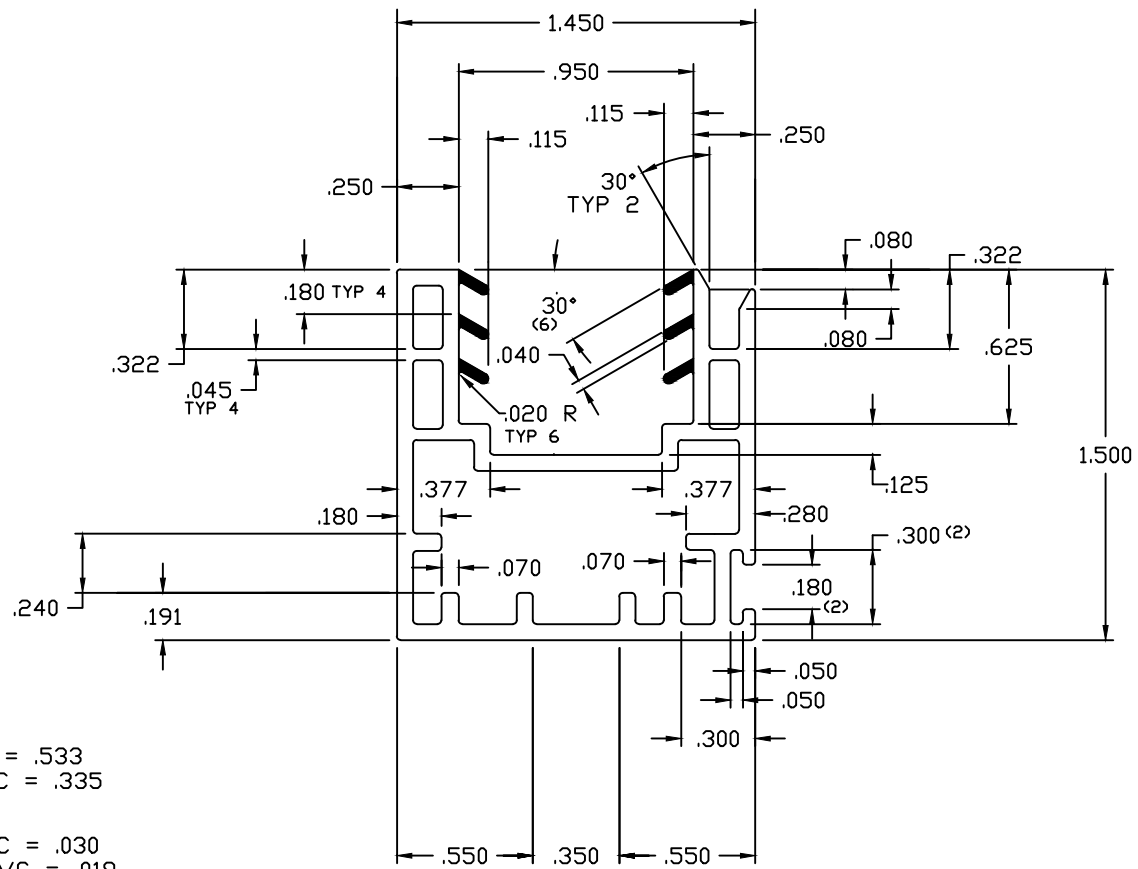
DWG NO B-DHDS-2000



DO NOT SCALE DRAWING

<input checked="" type="checkbox"/> LOCATION FOR IMPACT TEST SPECIFICATION-LENGTHS TO 3/8"		ALLOWABLE BOW MAX. 1" PER 14' ANGULARITY TO BE ± 1/2°		TOLERANCES- .XX ± .010 .XXX ± .005	
DRAWN FOR  BY DDS DESIGNS "OUR NAME SAYS IT ALL"		1) MATERIAL RIGID PVC 2) CAPSTOCK  3) UNSPECIFIED WALLS .065 4) BREAK ALL CORNERS .015R 5) AREA .636 SQ. IN. 6) WT/FT .400 LBS/FT.		TITLE MECHANICAL DOUBLE HUNG HANDLE SASH DWN BY DDS SCALE FULL DATE 11/18/02 CHKD BY APPD BY COMPUTER NO DWG NO B-DHHS-2002	

NO.	REVISION	BY	DATE



AREA OF RIGID PVC = .533
 WT/FT OF RIGID PVC = .335

AREA OF FLEXIBLE PVC = .030
 WT/FT OF FLEXIBLE PVC = .019

NO.	REVISION	BY	DATE

∇ LOCATION FOR IMPACT TEST
 SPECIFICATION—LENGTHS TO 3/8"

ALLOWABLE BOW MAX. 1" PER 14'
 ANGULARITY TO BE ± 1/2

DRAWN FOR

BY
 DDS
 DESIGNS

"OUR NAME SAYS IT ALL"

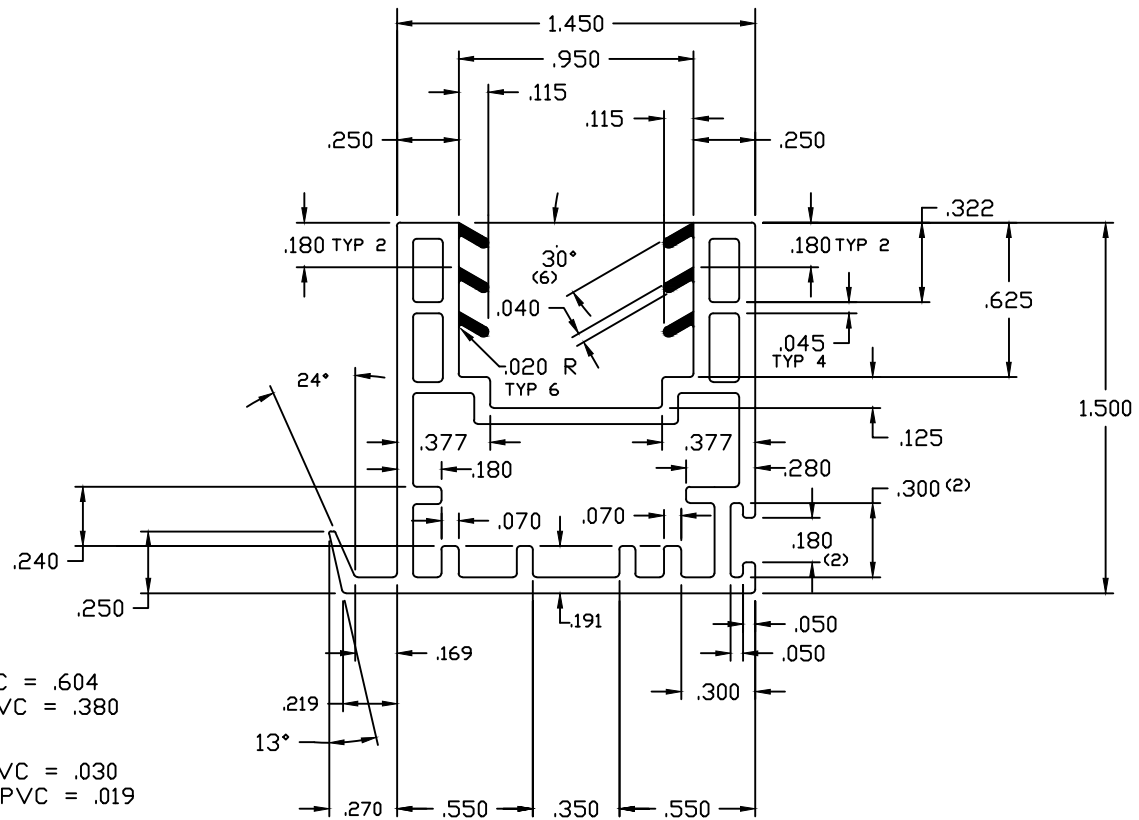
- 1) MATERIAL RIGID PVC
- 2) CAPSTOCK
- 3) UNSPECIFIED WALLS .065
- 4) BREAK ALL CORNERS .015 R
- 5) AREA .563 SQ. IN.
- 6) WT/FT .345 LBS/FT

TITLE MECHANICAL DOUBLE HUNG
 INTERLOCK FEMALE-LOCK RAIL

DWN BY DDS	SCALE FULL	DATE 11/16/02	CHKD BY	APPD BY
---------------	---------------	------------------	---------	---------

COMPUTER NO

DWG NO B-DHIF-2003



AREA OF RIGID PVC = .604
 WT/FT OF RIGID PVC = .380

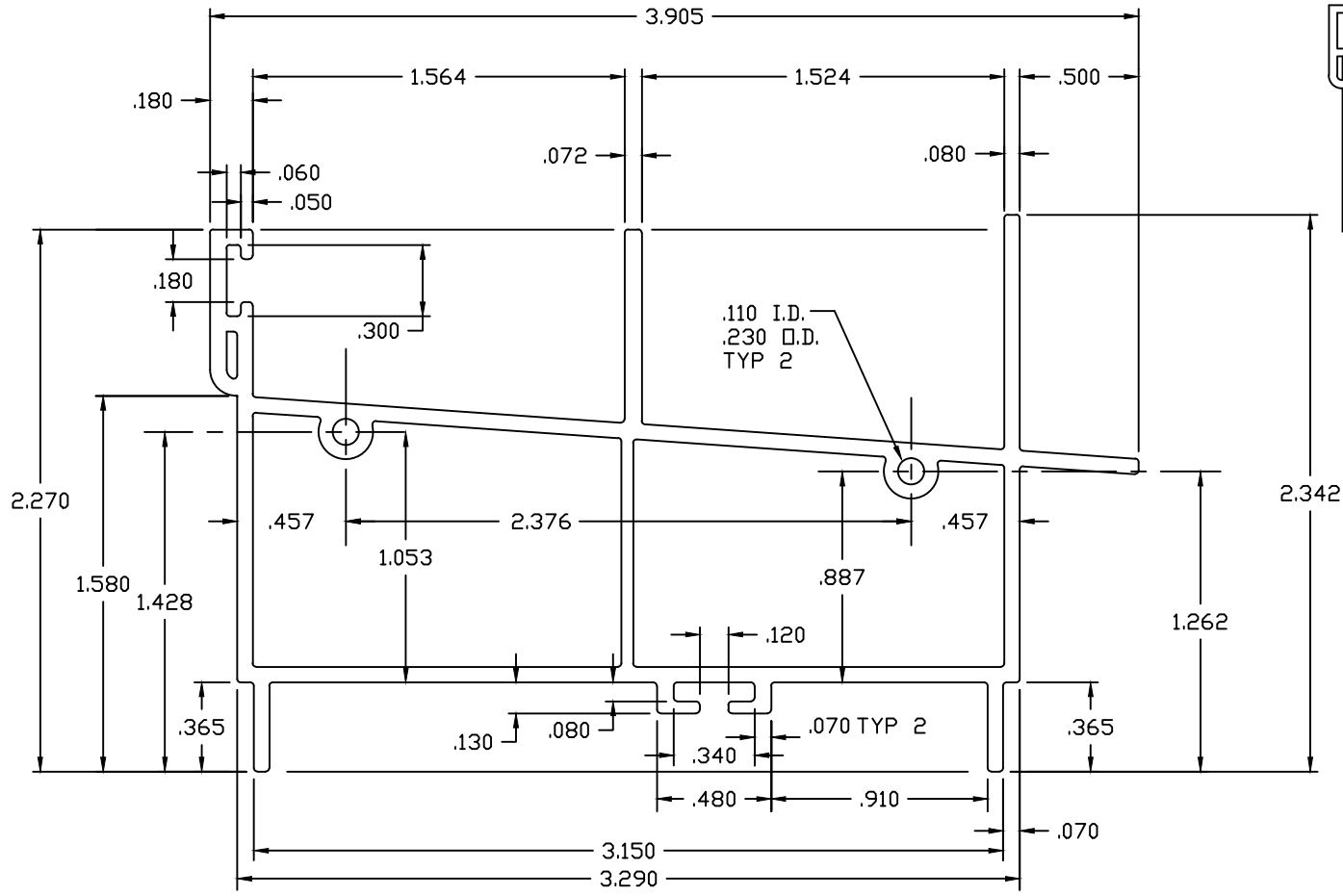
AREA OF FLEXIBLE PVC = .030
 WT/FT OF FLEXIBLE PVC = .019

DO NOT SCALE DRAWING

NO.	REVISION	BY	DATE

		LOCATION FOR IMPACT TEST SPECIFICATION—LENGTHS TO 3/8"		ALLOWABLE BOW MAX. 1" PER 14' ANGULARITY TO BE ± 1/2"	
DRAWN FOR 		BY 		1) MATERIAL RIGID PVC 2) CAPSTOCK	
				3) UNSPECIFIED WALLS .065 4) BREAK ALL CORNERS .015 R 5) AREA .634 SQ. IN. 6) WT/FT .399 LBS/FT	
				TITLE MECHANICAL DOUBLE HUNG INTERLOCK MALE-KEEPER RAIL	
				DWN BY DDS SCALE FULL DATE 11/16/02 CHKD BY APPD BY	
				COMPUTER NO	
				DWG NO B-DHIM-2004	

"OUR NAME SAYS IT ALL"



DO NOT SCALE DRAWING

NO.	REVISION	BY	DATE

☒ LOCATION FOR IMPACT TEST SPECIFICATION—LENGTHS TO 3/8"

ALLOWABLE BOW MAX. 1" PER 14' ANGULARITY TO BE ± 1/2

DRAWN FOR

BY
DDS
DESIGNS

"OUR NAME SAYS IT ALL"

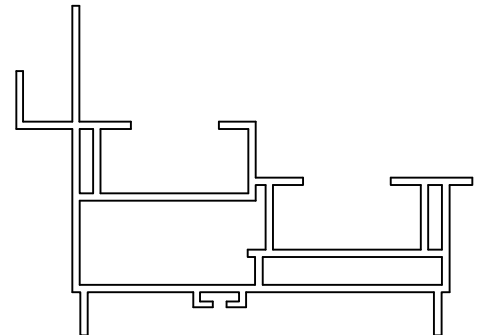
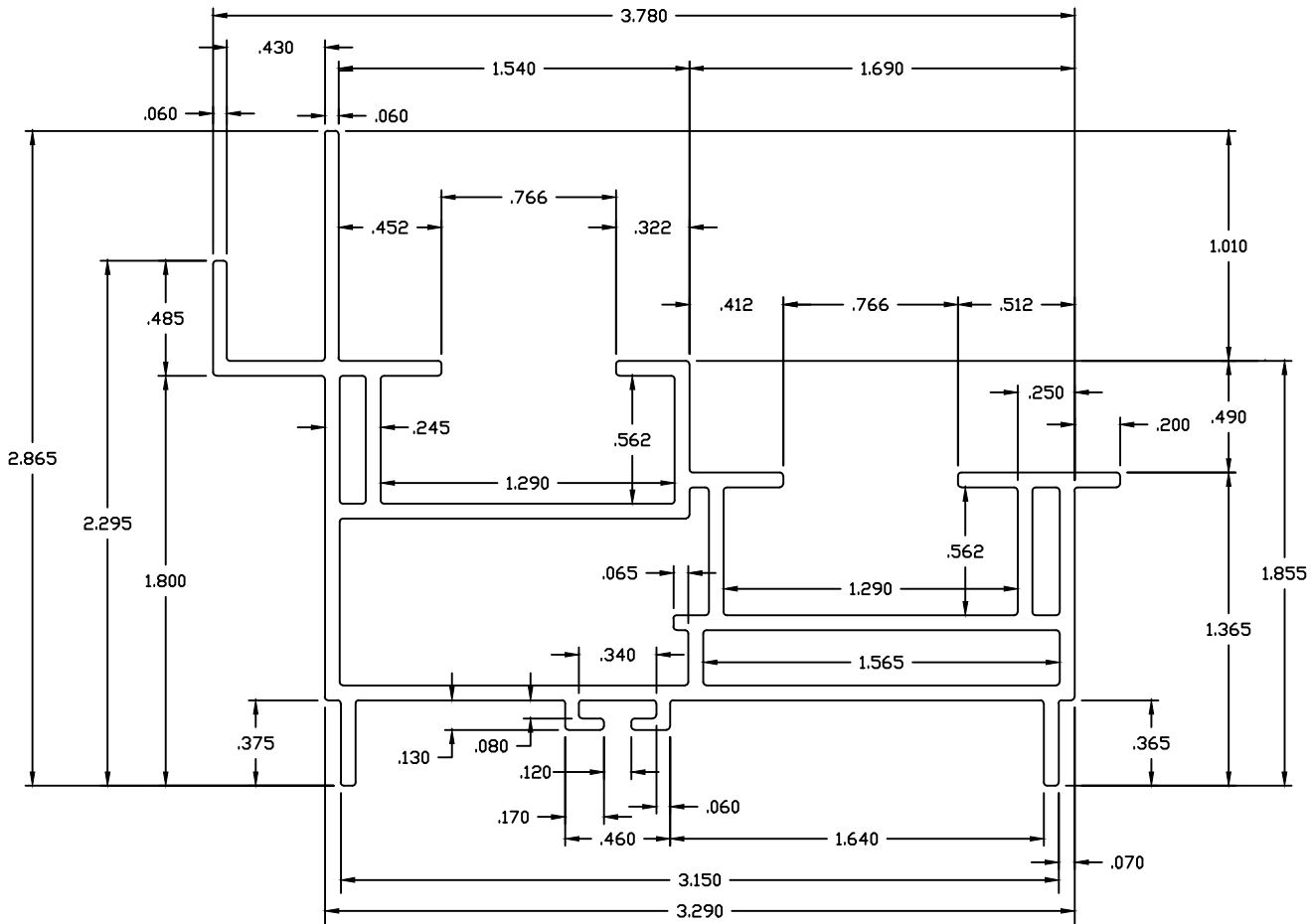
- 1) MATERIAL RIGID PVC
- 2) CAPSTOCK
- 3) UNSPECIFIED WALLS .065
- 4) BREAK ALL CORNERS .015 R
- 5) AREA .959 SQ. IN.
- 6) WT/FT .603 LBS/FT

TITLE MECHANICAL DOUBLE HUNG MASTER HEAD


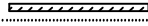
DWN BY DDS	SCALE 2:1	DATE 11/13/02	CHKD BY	APPD BY
---------------	--------------	------------------	---------	---------

COMPUTER NO

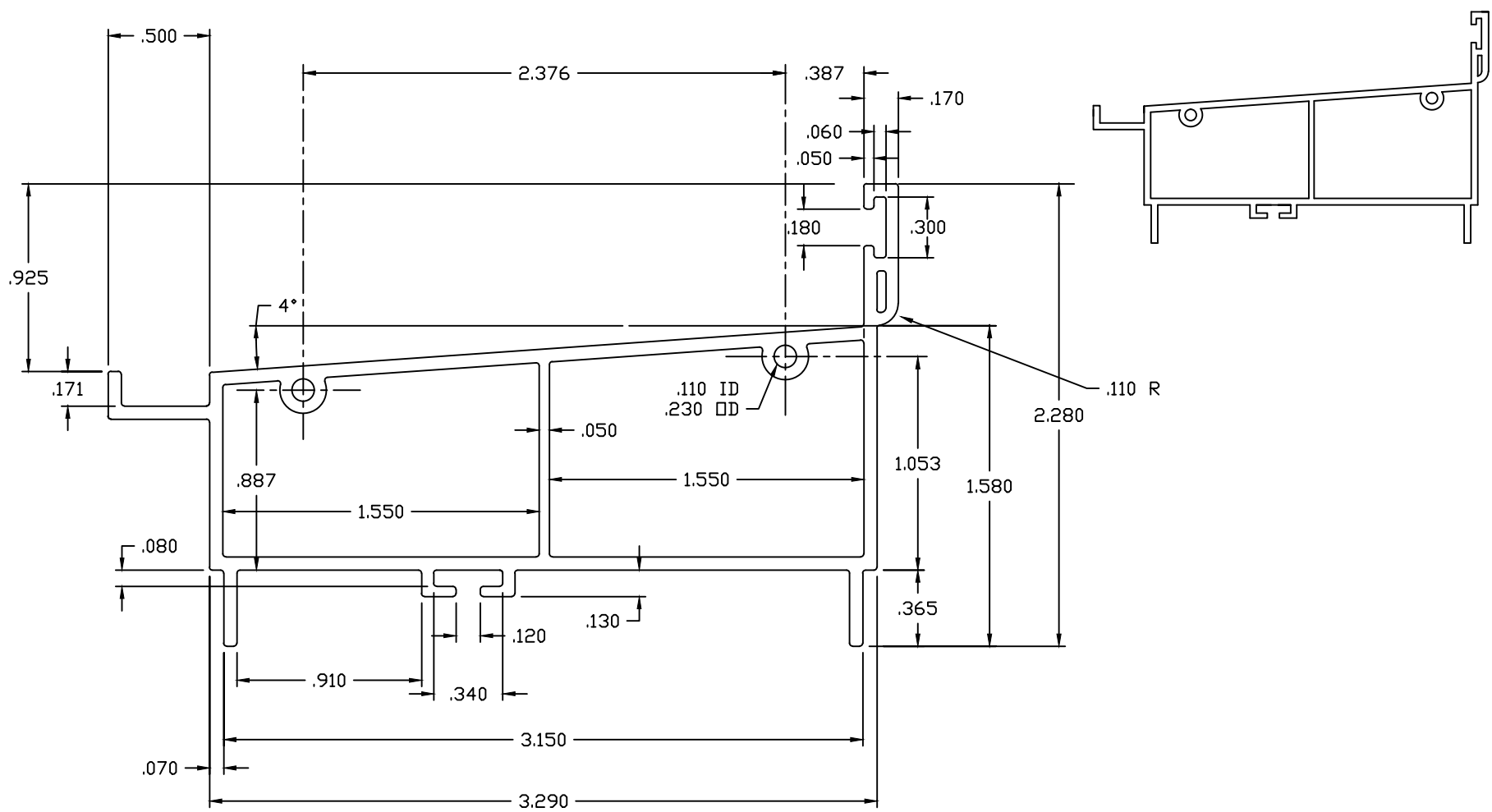
DWG NO B-DHMH-2011



DO NOT SCALE DRAWING

<input checked="" type="checkbox"/> LOCATION FOR IMPACT TEST SPECIFICATION-LENGTHS TO 3/8"		ALLOWABLE BOW MAX. 1" PER 14' ANGULARITY TO BE ± 1/2°		TOLERANCES- .XX ± .010 .XXX ± .005	
DRAWN FOR  BY DDS DESIGNS "OUR NAME SAYS IT ALL"		1) MATERIAL RIGID PVC 2) CAPSTOCK  3) UNSPECIFIED WALLS .065 4) BREAK ALL CORNERS .015 R 5) AREA 1.053 SQ. IN. 6) WT/FT .663 LBS/FT		TITLE MECHANICAL DOUBLE HUNG JAMB DWN BY DDS SCALE 2:1 DATE 11/14/02 CHKD BY APPD BY COMPUTER NO DWG NO B-DHMJ-2012	

NO.	REVISION	BY	DATE



DO NOT SCALE DRAWING

NO.	REVISION	BY	DATE

LOCATION FOR IMPACT TEST
SPECIFICATION—LENGTHS TO 3/8"

ALLOWABLE BOW MAX. 1" PER 14'
ANGULARITY TO BE ± 1/2

DRAWN FOR

BY
DDS
DESIGNS

"OUR NAME SAYS IT ALL"

- 1) MATERIAL RIGID PVC
- 2) CAPSTOCK
- 3) UNSPECIFIED WALLS .065
- 4) BREAK ALL CORNERS .015 R
- 5) AREA .815 SQ. IN.
- 6) WT/FT .512 LBS/FT

TITLE MECHANICAL DOUBLE HUNG SILL				
DWN BY DDS	SCALE 2:1	DATE 11/14/02	CHKD BY	APPD BY
COMPUTER NO				
DWG NO B-DHMS-2013				