

# NORTH EAST WINDOWS USA, INC.

## COMPUTER SIMULATION REPORT

**SCOPE OF WORK**

SH660 SINGLE HUNG - NFRC 100/200/500

**REPORT NUMBER**

M2621.01-116-45 R0

**TEST DATE**

08/23/21

**ISSUE DATE**

08/23/21

**RECORD RETENTION END DATE**

08/23/26

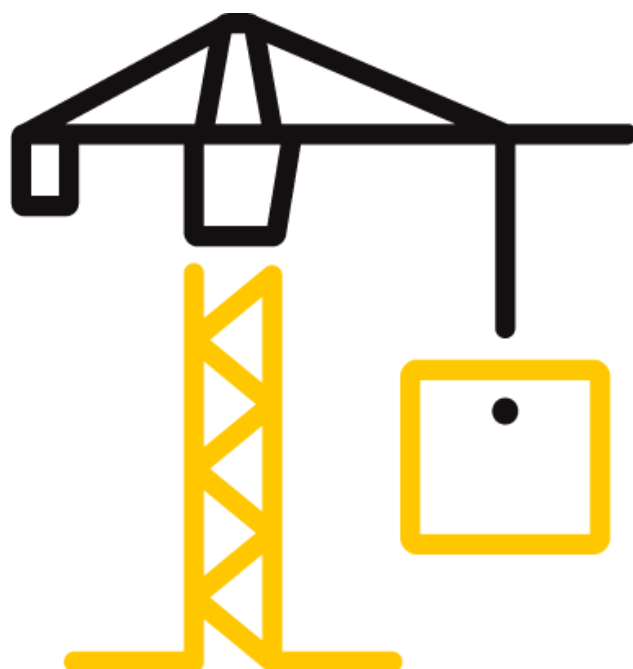
**PAGES**

25

**DOCUMENT CONTROL NUMBER**

RT-R-AMER-Test-4044 (01/16/19)

©2017 INTERTEK





Total Quality. Assured.

130 Derry Court  
York, Pennsylvania 17406

Telephone: 717-764-7700  
Facsimile: 717-764-4129  
www.intertek.com/building

**TEST REPORT FOR NORTH EAST WINDOWS USA, INC.**

Report No: M2621.01-116-45 R0

Date: 08/23/21

**REPORT ISSUED TO**

**NORTH EAST WINDOWS USA, INC.**

One Kes Place

Merrick, New York 11566

**SECTION 1**

**SUMMARY**

**SERIES/MODEL: SH660 Single Hung**

Architectural Testing, Inc. (an Intertek company) dba Intertek Building & Construction (B&C) was contracted to perform U-Factor, Solar Heat Gain Coefficient, Visible Transmittance and Condensation Resistance simulations in accordance with the National Fenestration Rating Council (NFRC).

This report does not constitute certification of this product nor an opinion or endorsement by this laboratory. Intertek B&C will service this report for the entire test record retention period. The test record retention period ends five years after the test date. Test records, such as detailed drawings, datasheets, representative samples of test specimens, or other pertinent project documentation, will be retained for the entire test record retention period.

FOR INTERTEK B&C:

**COMPLETED BY:** Allison M. Ford  
**TITLE:** Simulation Technician  
**SIGNATURE:**  
**DATE:** 08/23/21

**REVIEWED BY:** Eric S. Leitner  
**TITLE:** Manager - Simulations and Thermal Testing, SIRC  
**SIGNATURE:**  
**DATE:** 08/23/21

AMF:amf

---

This report is for the exclusive use of Intertek's Client and is provided pursuant to the agreement between Intertek and its Client. Intertek's responsibility and liability are limited to the terms and conditions of the agreement. Intertek assumes no liability to any party, other than to the Client in accordance with the agreement, for any loss, expense or damage occasioned by the use of this report. Only the Client is authorized to permit copying or distribution of this report and then only in its entirety. Any use of the Intertek name or one of its marks for the sale or advertisement of the tested material, product or service must first be approved in writing by Intertek. The observations and test results in this report are relevant only to the sample(s) tested. This report by itself does not imply that the material, product, or service is or has ever been under an Intertek certification program.

## TEST REPORT FOR NORTH EAST WINDOWS USA, INC.

Report No: M2621.01-116-45 R0

Date: 08/23/21

### SECTION 2

#### TEST METHODS

The products were evaluated in accordance with the following:

***ANSI/NFRC 100-2020, Procedure for Determining Fenestration Product U-Factors***

***ANSI/NFRC 200-2020, Procedure for Determining Fenestration Product Solar Heat Gain Coefficient and Visible Transmittance at Normal Incidence***

***NFRC 500-2017, Procedure for Determining Fenestration Product Condensation Resistance Values***

*\*Condensation Resistance results obtained from this procedure are for controlled laboratory conditions and do not include the effects of air movement through the specimen, solar radiation, and the thermal bridging that may occur due to the specific design and construction of the fenestration system opening.*

Ratings values included in this report are for submittals to an NFRC-licensed IA and are not meant to be used directly for labeling purposes. Only those values identified on a valid Certificate of Authorization (CA) by an NFRC accredited Inspection Agency (IA) are to be used for labeling purposes. The ratings values were rounded in accordance with NFRC 601, NFRC Unit and Measurement Policy.

Intertek B&C is an NFRC accredited simulation laboratory and all simulations were conducted in full compliance with NFRC approved procedures and specifications. The values included in this report are not considered in compliance with ANSI/NFRC 100, ANSI/NFRC 200, and/or NFRC 500 unless the associated validation test requirements have been satisfied, as applicable.

**TEST REPORT FOR NORTH EAST WINDOWS USA, INC.**

Report No: M2621.01-116-45 R0

Date: 08/23/21

**SECTION 3**

**TEST PROCEDURE**

The total product, including specific frame, spacer, and glass details, was modeled using NFRC approved software.

<b>FRAME AND EDGE MODELING</b>	THERM 7.4.4
<b>CENTER-OF-GLASS MODELING</b>	WINDOW 7.4.14
<b>TOTAL PRODUCT CALCULATIONS</b>	WINDOW 7.4.14
<b>SPECTRAL DATA LIBRARY</b>	IGDB 81.0

**Modeling Assumptions / Technical Interpretations**

Any modeling assumptions and technical interpretations required to model this product are listed below.

- 1) To prevent air infiltration, tape was applied to all interior sash crack locations.
- 2) The nailing fin and j-channel were not modeled because they are removable by the manufacturer.
- 3) Dividers were not modeled in accordance with ANSI/NFRC 100-2020, Section 4.2.4.1.D.ii.a.

**SECTION 4**

**SIMULATION SPECIMEN DESCRIPTION**

<b>SERIES/MODEL</b>	SH660 Single Hung
<b>PRODUCT TYPE</b>	Vertical Slider, Single Hung
<b>FRAME MATERIAL</b>	VY - Vinyl
<b>SASH MATERIAL</b>	VY - Vinyl
<b>STANDARD SIZE</b>	1200mm x 1500mm

## TEST REPORT FOR NORTH EAST WINDOWS USA, INC.

Report No: M2621.01-116-45 R0

Date: 08/23/21

### SECTION 4 (Continued)

#### SIMULATION SPECIMEN DESCRIPTION

SPACER OPTIONS			
TYPE	PRIMARY SEAL	SECONDARY SEAL	CODE
Quanex Duralite Spacer	Butyl Rubber		P1-S

GRID OPTIONS		
GRID SIZE	GRID TYPE	GRID PATTERN
3/16" x 5/8"	Aluminum Rectangular Grid (Painted)	NFRC Standard

REINFORCEMENT OPTIONS	
LOCATION	MATERIAL
None	-

GAS FILLING TECHNIQUE	
FILL TYPE	METHOD
90% Argon	Single Probe, Timed

EDGE-OF-GLASS CONSTRUCTION	
<b>INTERIOR CONDITION</b>	Foam weatherstripping / rigid PVC glazing bead with flexible fins
<b>EXTERIOR CONDITION</b>	Foam weatherstripping / rigid PVC glazing bead with flexible fins

WEATHERSTRIPPING		
TYPE	QUANTITY	LOCATION
Finpile	1 Row	Sill, Bottom Rail
Finpile	2 Rows	Interlock, Operable Stile

FRAME/SASH MATERIALS FINISH	
<b>INTERIOR</b>	Vinyl
<b>EXTERIOR</b>	Vinyl

VALIDATION MATRIX*	
PRODUCT LINE	REPORT NUMBER
None	-

\*These products are part of a validation matrix. Only one is required for validation testing.

**TEST REPORT FOR NORTH EAST WINDOWS USA, INC.**

Report No: M2621.01-116-45 R0

Date: 08/23/21

**SECTION 5**

**SPECIALTY PRODUCTS TABLE**

The specialty products method allows the manufacturer to determine the overall product SHGC and VT for any glazing option. The center of glass SHGC and/or VT must be determined using WINDOW 7.4.14. The method calculates overall product SHGC and VT indexed on center of glass properties. All values used in the calculations are truncated to six decimal place precision.

	No Dividers	Dividers < 1	Dividers > 1
<b>SHGC0</b>	0.003956	0.006766	0.009417
<b>SHGC1</b>	0.796809	0.714371	0.636612
<b>VT0</b>	0.000000	0.000000	0.000000
<b>VT1</b>	0.792853	0.707605	0.627195

$$SHGC = SHGC0 + SHGCc (SHGC1 - SHGC0)$$

$$VT = VT0 + VTc (VT1 - VT0)$$

## TEST REPORT FOR NORTH EAST WINDOWS USA, INC.

Report No: M2621.01-116-45 R0

Date: 08/23/21

### SECTION 6

### SIMULATION RESULTS

TOTAL PRODUCT CALCULATIONS (SH660 Single Hung)												
Option Number	Pane Thickness 1 (in)	Gap Width 1 (in)	Pane Thickness 2 (in)	Gap Width 2 (in)	Pane Thickness 3 (in)	Gap Width 3 (in)	Pane Thickness 4 (in)	Gap Fill	Low-e (Surface #)	Tint	Spacer	Grid Type
	U-Factor (Btu/Hr-Ft2-F)			Solar Heat Gain Coefficient (SHGC) Grids (None / <1 / >=1)				Visible Transmittance (VT) Grids (None / <1 / >=1)		Condensation Resistance (CR)		
1	CS36 / ARG90 / CLR (2MM/2MM) - 3/4" IG											
	0.090	0.563	0.086					ARG90	0.027(#2)	CL	P1-S	N,G
	U-Factor 0.28			SHGC(N/<1) 0.29 / 0.26				VT(N/<1) 0.54 / 0.48		CR 62		
2	CS36 / ARG90 / CLR (3MM/3MM) - 3/4" IG											
	0.128	0.500	0.123					ARG90	0.027(#2)	CL	P1-S	N,G
	U-Factor 0.27			SHGC(N/<1) 0.29 / 0.26				VT(N/<1) 0.53 / 0.47		CR 61		
3	CS28 / ARG90 / CLR (2MM/2MM) - 3/4" IG											
	0.087	0.563	0.086					ARG90	0.023(#2)	CL	P1-S	N,G
	U-Factor 0.27			SHGC(N/<1) 0.23 / 0.20				VT(N/<1) 0.51 / 0.45		CR 62		
4	CS28 / ARG90 / CLR (3MM/3MM) - 3/4" IG											
	0.125	0.500	0.123					ARG90	0.021(#2)	CL	P1-S	N,G
	U-Factor 0.27			SHGC(N/<1) 0.23 / 0.21				VT(N/<1) 0.50 / 0.45		CR 61		
5	CLR / ARG90 / CS36 (2MM/2MM) - 3/4" IG											
	0.086	0.563	0.090					ARG90	0.027(#3)	CL	P1-S	N,G
	U-Factor 0.28			SHGC(N/<1) 0.38 / 0.35				VT(N/<1) 0.54 / 0.48		CR 62		
6	CLR / ARG90 / CS36 (3MM/3MM) - 3/4" IG											
	0.123	0.500	0.128					ARG90	0.027(#3)	CL	P1-S	N,G
	U-Factor 0.27			SHGC(N/<1) 0.38 / 0.34				VT(N/<1) 0.53 / 0.47		CR 61		
7	CLR / ARG90 / CS28 (2MM/2MM) - 3/4" IG											
	0.086	0.563	0.087					ARG90	0.023(#3)	CL	P1-S	N,G
	U-Factor 0.27			SHGC(N/<1) 0.31 / 0.28				VT(N/<1) 0.51 / 0.45		CR 62		
8	CLR / ARG90 / CS28 (3MM/3MM) - 3/4" IG											
	0.123	0.500	0.125					ARG90	0.021(#3)	CL	P1-S	N,G
	U-Factor 0.27			SHGC(N/<1) 0.31 / 0.28				VT(N/<1) 0.50 / 0.45		CR 61		
9	RLE 70/36 / ARG90 / CLR (2MM/2MM) - 3/4" IG											
	0.090	0.563	0.090					ARG90	0.036(#2)	CL	P1-S	N,G
	U-Factor 0.28			SHGC(N/<1) 0.31 / 0.28				VT(N/<1) 0.56 / 0.50		CR 61		
10	RLE 70/36 / ARG90 / CLR (3MM/3MM) - 3/4" IG											
	0.117	0.500	0.117					ARG90	0.036(#2)	CL	P1-S	N,G
	U-Factor 0.28			SHGC(N/<1) 0.31 / 0.28				VT(N/<1) 0.56 / 0.50		CR 61		

## TEST REPORT FOR NORTH EAST WINDOWS USA, INC.

Report No: M2621.01-116-45 R0

Date: 08/23/21

### SECTION 6 (Continued)

### SIMULATION RESULTS

TOTAL PRODUCT CALCULATIONS (SH660 Single Hung)												
Option Number	Pane Thickness 1 (in)	Gap Width 1 (in)	Pane Thickness 2 (in)	Gap Width 2 (in)	Pane Thickness 3 (in)	Gap Width 3 (in)	Pane Thickness 4 (in)	Gap Fill	Low-e (Surface #)	Tint	Spacer	Grid Type
	U-Factor (Btu/Hr-Ft <sup>2</sup> -F)		Solar Heat Gain Coefficient (SHGC) Grids (None / <1 / >=1)				Visible Transmittance (VT) Grids (None / <1 / >=1)		Condensation Resistance (CR)			
11	CLR / ARG90 / RLE 70/36 (2MM/2MM) - 3/4" IG											
	0.090	0.563	0.090					ARG90	0.036(#3)	CL	P1-S	N,G
	U-Factor 0.28		SHGC(N/<1) 0.39 / 0.35				VT(N/<1) 0.56 / 0.50		CR 62			
12	CLR / ARG90 / RLE 70/36 (3MM/3MM) - 3/4" IG											
	0.117	0.500	0.117					ARG90	0.036(#3)	CL	P1-S	N,G
	U-Factor 0.28		SHGC(N/<1) 0.39 / 0.35				VT(N/<1) 0.56 / 0.50		CR 61			





Total Quality. Assured.

130 Derry Court  
York, Pennsylvania 17406

Telephone: 717-764-7700  
Facsimile: 717-764-4129  
[www.intertek.com/building](http://www.intertek.com/building)

**TEST REPORT FOR NORTH EAST WINDOWS USA, INC.**

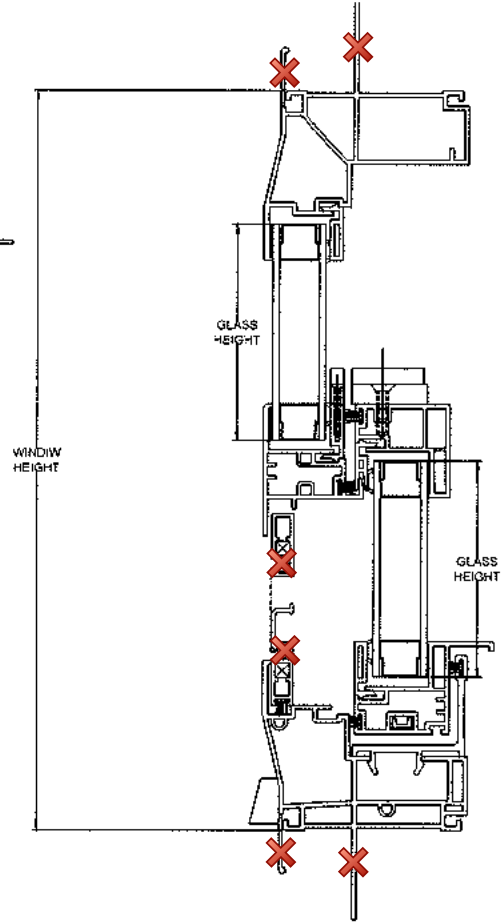
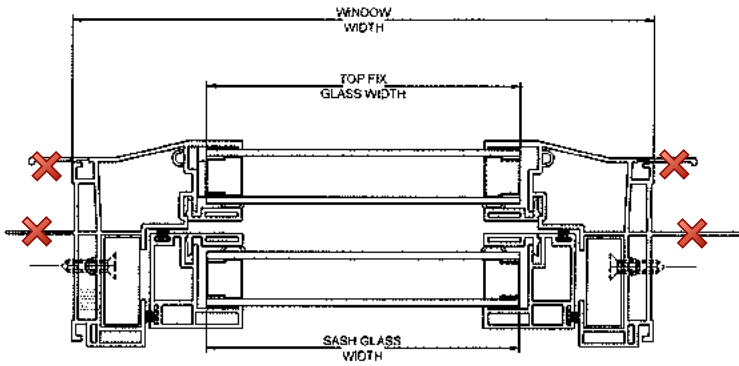
Report No: M2621.01-116-45 R0

Date: 08/23/21


**SECTION 7**

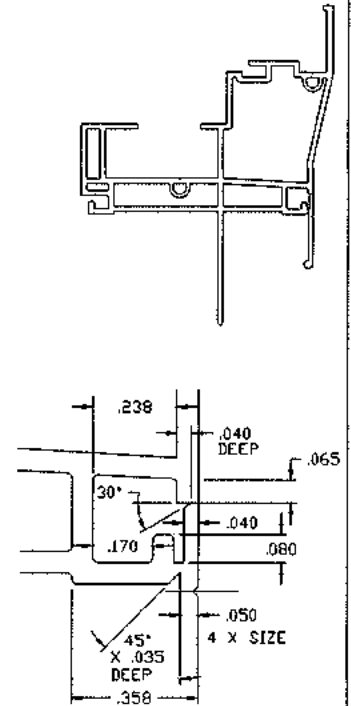
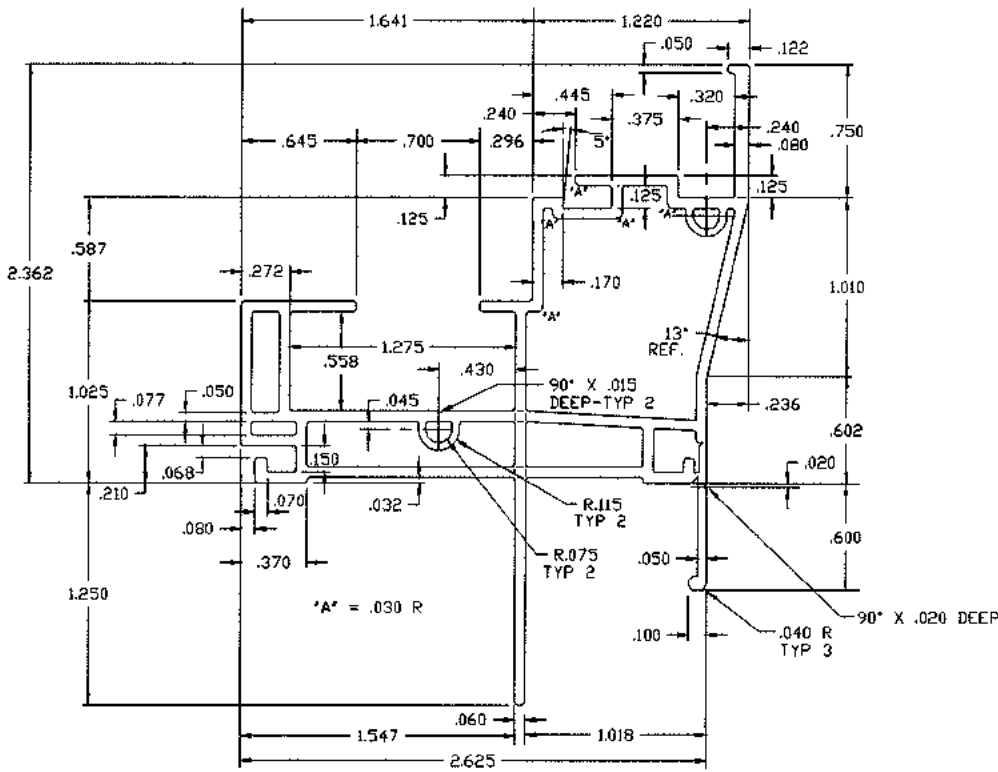
**DRAWINGS / BILL OF MATERIALS**

The drawings which follow have been reviewed by Intertek B&C and are representative of the simulation results reported herein. Any deviations are documented herein or on the drawings.



NO.	REVISION	BY	DATE

LOCATION FOR IMPACT TEST SPECIFICATION—LENGTHS TO 3/8"	ALLOWABLE BOW MAX. 1" PER 14" ANGULARITY TO BE ± 1/2	DO NOT SCALE DRAWING
DRAW FOR  BY DDS DESIGNS	1) MATERIAL RIGID PVC 2) CAPSTOCK 3) UNSPECIFIED WALLS 4) BREAK ALL CORNERS .015R 5) AREA SQ. IN. 6) WT./FT. LBS./FT.	TITLE SINGLE HUNG w/TALL SILL SNAP IN CROSS CUTS SH 660 DWG BY DDS SCALE DATE 09/14/14 DESIGNED BY DWG NO C-SH CROSS CUT
*OUR NAME SAYS IT ALL		



DO NOT SCALE DRAWING

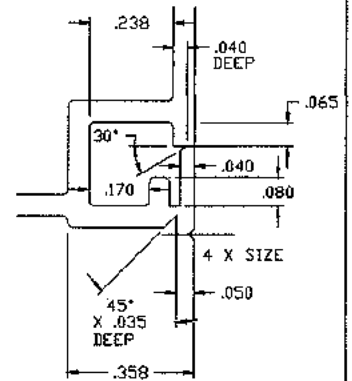
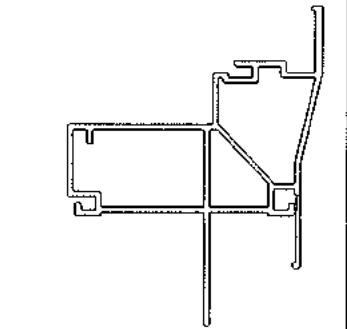
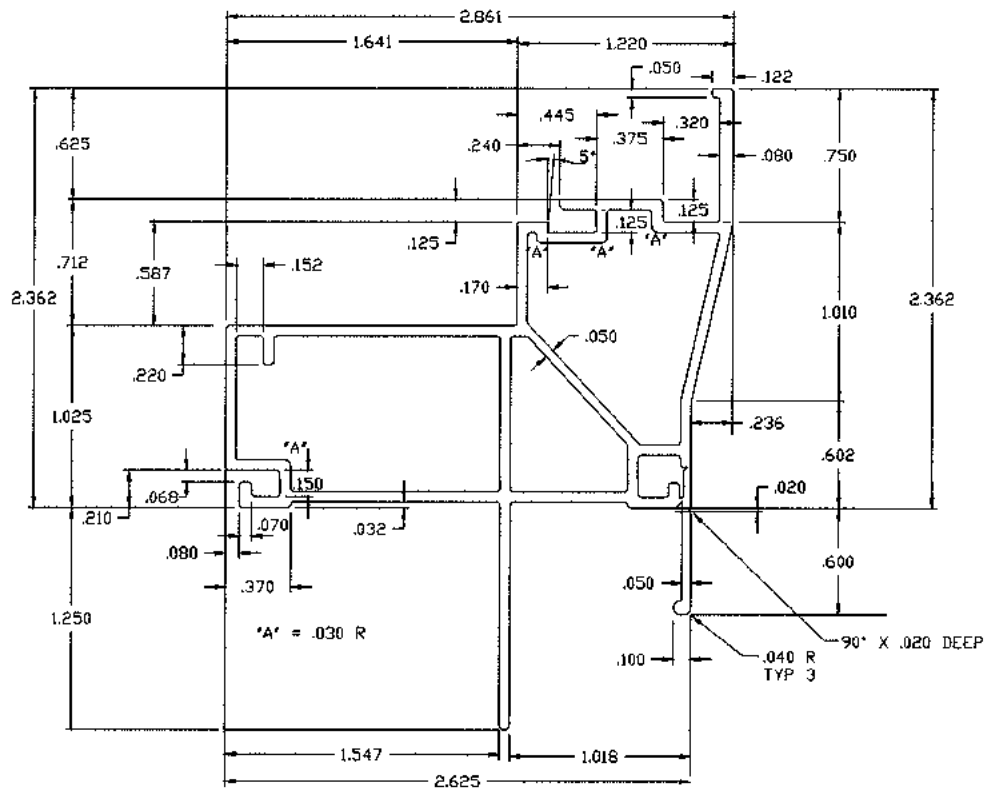
LOCATION FOR IMPACT TEST SPECIFICATION-LENGTHS TO 3/8"



- 1) MATERIAL RIGID PVC
- 2) CAPSTOCK
- 3) UNSPECIFIED WALLS .060
- 4) BREAK ALL CORNERS .015 R
- 5) AREA 1.121 SQ.IN.
- 6) WT/FT 705 LBS/FT

TITLE SH660 JAMB WITH J FLANGE/FIN				
DWN BY DDS	SCALE 2:1	DATE 1-8-99	CHKD BY	APPD BY
COMPUTER NO				
DWG NO B-SHJUF-1512				

NO.	REVISION	BY	DATE



DO NOT SCALE DRAWING

LOCATION FOR IMPACT TEST  
SPECIFICATION—LENGTHS TO 3/8"

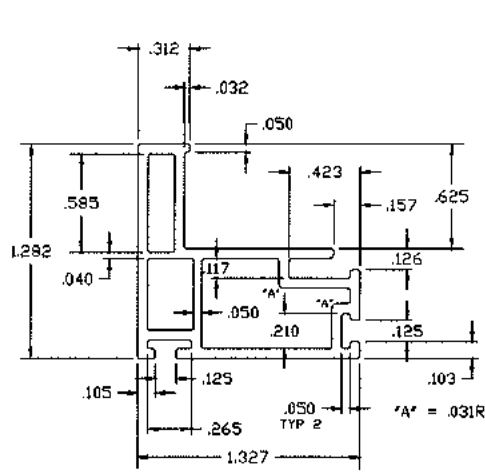
DRAWN FOR  
  
 BY  
  
 "OUR NAME SAYS IT ALL"

- 1) MATERIAL RIGID PVC
- 2) CAPSTOCK
- 3) UNSPECIFIED WALLS .060
- 4) BREAK ALL CORNERS .015 R
- 5) AREA 1.056 SQ. IN.
- 6) WT/FT .668 LBS/FT

TITLE BUILDERS WINDOW  
HEAD WITH J FLANGE/FIN

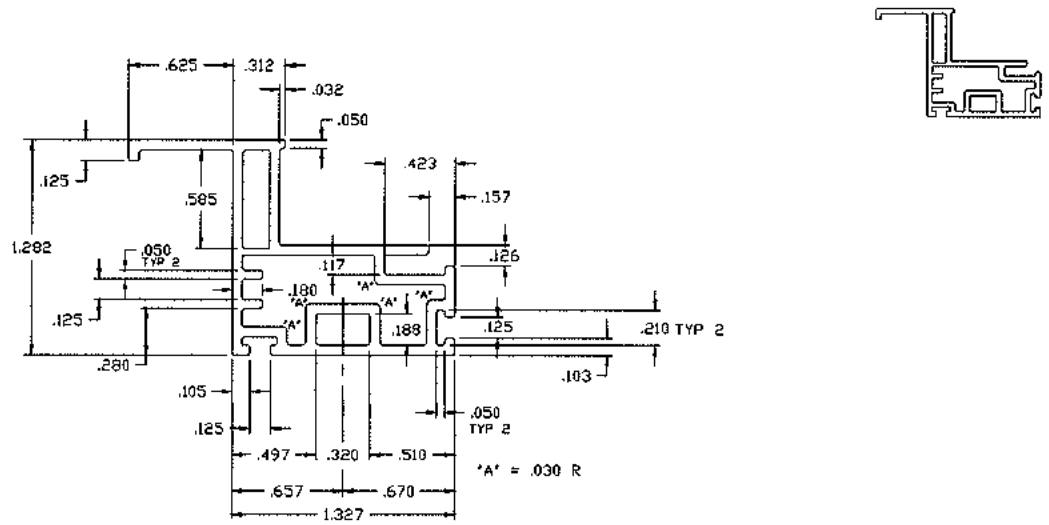
DRAWN BY DDS	SCALE 2:1	DATE 2-1-99	CHKD BY	APPD BY
COMPUTER NO				
DWG NO B-SHHJF-1511				

NO.	REVISION	BY	DATE







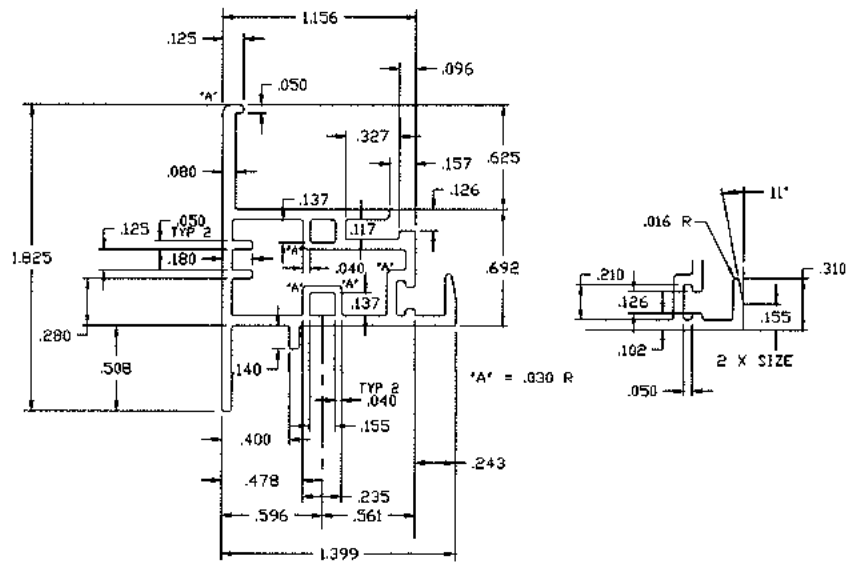
DO NOT SCALE DRAWING

			LOCATION FOR IMPACT TEST SPECIFICATION—LENGTHS TO 3/8"						
			DRAWN FOR 	1) MATERIAL RIGID PVC 2) CAPSTOCK 3) UNSPECIFIED WALLS .065 4) BREAK ALL CORNERS .015 5) AREA .394 SQ.IN. 6) WT/FT .248 LBS/FT			TITLE SH660 REGULAR SASH		
				BY 			DWN BY DDsR		
			"OUR NAME SAYS IT ALL"			SCALE 2:1 DATE 1-6-99 CHKD BY APPD BY			
NO. REVISION BY DATE						COMPUTER NO DWG NO B-SHSS-1000			




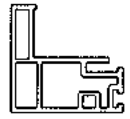
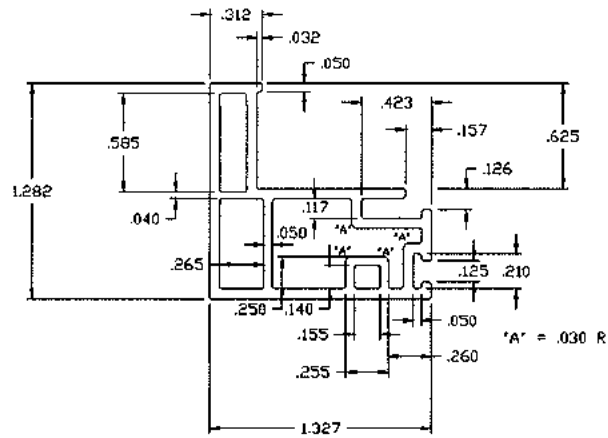
DO NOT SCALE DRAWING

		 LOCATION FOR IMPACT TEST SPECIFICATION-LENGTHS TO 3/8"			
		 DRAWN FOR:  BY:  ODDS DESIGNS	1) MATERIAL <u>RIGID PVC</u> 2) CAPSTOCK 3) UNSPECIFIED WALLS .065 4) BREAK ALL CORNERS .015 R 5) AREA .452 SQ.IN. 6) WT/FT .284 LBS/FT		TITLE SH660 HANDLE SASH
NO.	REVISION		BY	DATE	DWN BY: <u>DDS</u> SCALE: <u>2:1</u> DATE: <u>1-6-99</u> CHKD BY:    APPD BY:
				COMPUTER NO	DWG NO B-SHSH-1002





DO NOT SCALE DRAWING

		<input checked="" type="checkbox"/> LOCATION FOR IMPACT TEST SPECIFICATION--LENGTHS TO 3/8"				
		DRAWN FOR  BY DDS DESIGNS "OUR NAME SAYS IT ALL"	1) MATERIAL <u>RIGID PVC</u> 2) CAPSTOCK 3) UNSPECIFIED WALLS 4) BREAK ALL CORNERS .015 R 5) AREA .436 SQ.IN. 6) WT/FT .274 LBS/FT		TITLE SH660 FIXED MEETING RAIL DWN BY DDS SCALE 2:1 DATE 1-6-99 CHKB BY APPD BY COMPUTER NO	
NO.	REVISION		BY	DATE	DWG NO B-SHMR-1003	

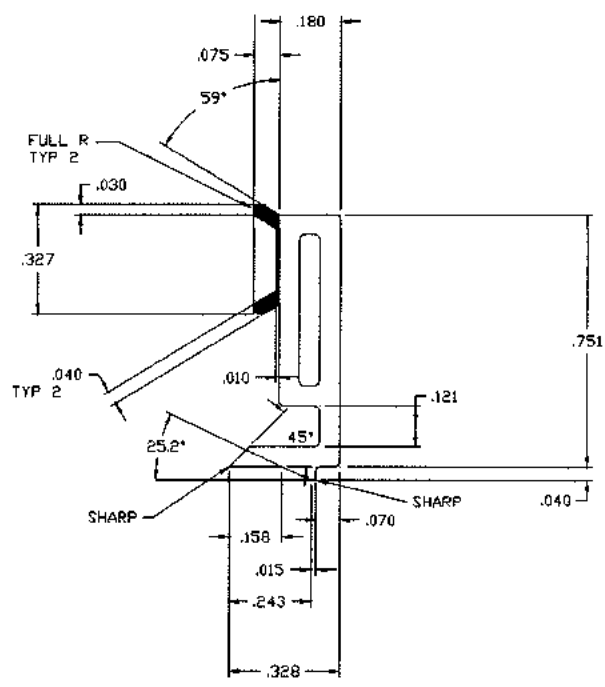


FULL SCALE

DO NOT SCALE DRAWING

			<input checked="" type="checkbox"/> LOCATION FOR IMPACT TEST SPECIFICATION—LENGTHS TO 3/8"								
			DRAWN FOR  BY  DESIGNERS "OUR NAME SAYS IT ALL"			1) MATERIAL RIGID PVC 2) CAPSTOCK 3) UNSPECIFIED WALLS .065 4) BREAK ALL CORNERS .015R 5) AREA .407 SQ. IN. 6) WT/FT .256 LBS/FT			TITLE SH660 FEMALE DWN BY DDS SCALE 2:1 DATE 1-6-99 CHKB BY APPD BY COMPUTER NO. DWG NO B-SHLR-1004		
NO.	REVISION	BY	DATE								






AREA OF RIGID PVC=.105  
 WT/FT OF RIGID PVC=.066

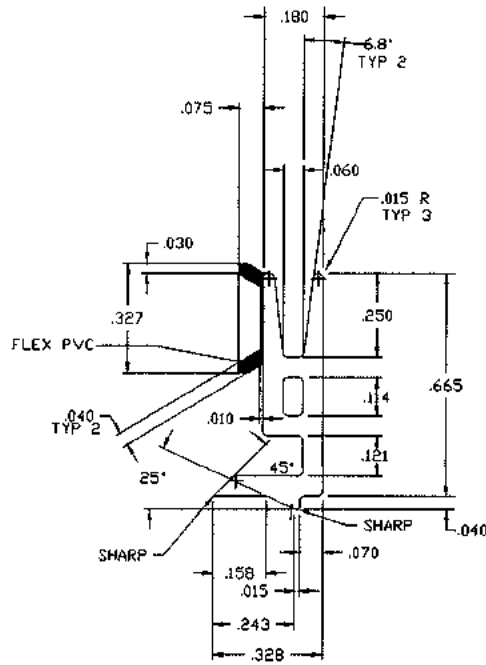
AREA OF FLEX PVC=.008  
 WT/FT OF FLEX PVC=.006

TOTAL AREA=.113  
 TOTAL WT/FT=.071

DO NOT SCALE DRAWING

NO.	REVISION	BY	DATE

LOCATION FOR IMPACT TEST SPECIFICATION—LENGTHS TO 3/8"		TITLE SH660 GLAZING BEAD	
DRAWN FOR  BY DDS DESIGNS "OUR NAME SAYS IT ALL"	1) MATERIAL RIGID PVC 2) CAPSTOCK 3) UNSPECIFIED WALLS .060 4) BREAK ALL CORNERS .015R 5) AREA .113 SQ.IN. 6) WT/FT .071 LBS/FT		DWN BY DDS
	COMPUTER NO	SCALE 4:1	DATE 1-8-99
DWG NO R-SHG-1008			DATE 1-8-99



AREA OF RIGID PVC=.095  
 WT/FT OF RIGID PVC=.054  
 AREA OF FLEX PVC=.008  
 WT/FT OF FLEX PVC=.006

*intertek*

DO NOT SCALE DRAWING

		LOCATION FOR IMPACT TEST SPECIFICATION—LENGTHS TO 3/8"						
		DRAWN FOR BY DDS DESIGNS "OUR NAME SAYS IT ALL"	1) MATERIAL <u>RIGID PVC</u> 2) CAPSTOCK 3) UNSPECIFIED WALLS .060 4) BREAK ALL CORNERS .015 R 5) AREA .093 SQ.IN. 6) WT/FT .060 LBS/FT		TITLE SH660 SH-INTERLOCK GLAZING BEAD			
NO.	REVISION		BY	DATE	DWN BY BDS	SCALE 4:1	DATE 1-8-99	CHKD BY
				COMPUTER NO				
				DWG NO B-SHG1-1009				

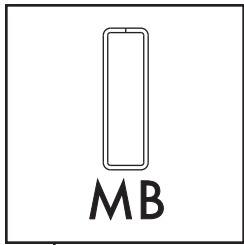


SH660

N.E. P/N	Qty	Description	Vendor P/N	Vendor	U.O.M.
		<b>FRAME PARTS</b>			
1511-00		FRAME, HEAD, W / FIN & J WHITE	1511-00	QUALITY	FT
1511-10		FRAME, HEAD, W / FIN & J ALMOND	1511-10	QUALITY	FT
1511-40		FRAME, HEAD, W / FIN & J CREAM	1511-40	QUALITY	FT
1011-00		FRAME, HEAD, NO / FIN & J WHITE	1011-00	QUALITY	FT
1011-10		FRAME, HEAD, NO / FIN & J ALMOND	1011-10	QUALITY	FT
1011-40		FRAME, HEAD, NO / FIN & J CREAM	1011-40	QUALITY	FT
1512-00		FRAME, SILL, W / FIN & J, WHITE	1512-00	QUALITY	FT
1512-10		FRAME, SILL, W / FIN & J, ALMOND	1512-10	QUALITY	FT
1512-40		FRAME, SILL, W / FIN & J, CREAM	1512-40	QUALITY	FT
1012-00		FRAME, SILL, NO / FIN & J, WHITE	1012-00	QUALITY	FT
1012-10		FRAME, SILL, NO / FIN & J, ALMOND	1012-10	QUALITY	FT
1012-40		FRAME, SILL, NO / FIN & J, CREAM	1012-40	QUALITY	FT
1512-00		FRAME, JAMB, W / FIN & J, WHITE	1512-00	QUALITY	FT
1512-10		FRAME, JAMB, W / FIN & J, ALMOND	1512-10	QUALITY	FT
1512-40		FRAME, JAMB, W / FIN & J, CREAM	1512-40	QUALITY	FT
1012-00		FRAME, JAMB, NO / FIN & J, WHITE	1012-00	QUALITY	FT
1012-10		FRAME, JAMB, NO / FIN & J, ALMOND	1012-10	QUALITY	FT
1012-40		FRAME, JAMB, NO / FIN & J, CREAM	1012-40	QUALITY	FT
1014-00		SILL INSERT, WHITE	1014-00	QUALITY	FT
1014-10		SILL INSERT, ALMOND	1014-10	QUALITY	FT
1014-40		SILL INSERT, CREAM	1014-40	QUALITY	FT
1008-00	1	GLAZING BEAD, PLAIN, WIDTH, WHITE	1008-00	QUALITY	FT
1008-10	1	GLAZING BEAD, PLAIN WIDTH, ALMOND	1008-10	QUALITY	FT
1008-40	1	GLAZING BEAD, PLAIN WIDTH, CREAM	1008-40	QUALITY	FT
1009-00	1	GLAZING BEAD, INTERLOCK, WIDTH, WHITE	1009-00	QUALITY	FT
1009-10	1	GLAZING BEAD, INTERLOCK, WIDTH, ALMOND	1009-10	QUALITY	FT
1009-40	1	GLAZING BEAD, INTERLOCK, WIDTH, CREAM	1009-40	QUALITY	FT
1008-00	2	GLAZING BEAD, PLAIN, HEIGHT, WHITE	1008-00	QUALITY	FT
1008-10	2	GLAZING BEAD, PLAIN, HEIGHT, ALMOND	1008-10	QUALITY	FT
1008-40	2	GLAZING BEAD, PLAIN, HEIGHT, CREAM	1008-40	QUALITY	FT
10059		WOOLPILE WHITE, .290 X .187	29018745WHGF	AMESBURY	FT
1003-00	1	CENTER MULLION, WHITE	1003-00	QUALITY	FT
1003-10	1	CENTER MULLION, ALMOND	1003-10	QUALITY	FT
1003-40	1	CENTER MULLION, CREAM	1003-40	QUALITY	FT
10000	2	TRANSOM CONNECTOR	10000	ACTIVE PRODUCTS SYSTEM	EA
10294	8	6A X 3/4 PH FLAT HD STL ZNC PL TAP SCREW	06A06PFSZ	MERCHANTS FASTENER CO	EA
10041		KEEPER, SINGLE HUNG, WHITE	BW SLK 04	ACTIVE PRODUCTS SYSTEM	EA
10297		KEEPER, SINGLE HUNG, ALMOND	AM SLK 04	ACTIVE PRODUCTS SYSTEM	EA
10298		KEEPER, SINGLE HUNG, CREAM	YW SLK 04	ACTIVE PRODUCTS SYSTEM	EA
10295		#6 X 1/2 PHIL FLAT HD SMS A #4HD #2 PHIL 410 SS	08A05PFSZWHT	MERCHANTS FASTENER CO	EA
10239		BALANCE 3.5LB	803003	AMESBURY-BSI	PCS
10240		BALANCE 4.5LB	803004	AMESBURY-BSI	PCS
10066		BALANCE 5.5LB	803005	AMESBURY-BSI	PCS
10067		BALANCE 6.5LB	803006	AMESBURY-BSI	PCS
10068		BALANCE 7.5LB	803007	AMESBURY-BSI	PCS
10069		BALANCE 9LB	803009	AMESBURY-BSI	PCS
10070		BALANCE 10LB	803010	AMESBURY-BSI	PCS
10241		BALANCE 11LB	803011	AMESBURY-BSI	PCS
10242		BALANCE 12LB	803012	AMESBURY-BSI	PCS
10243		BALANCE 13LB	803013	AMESBURY-BSI	PCS
10244		BALANCE 14LB	803014	AMESBURY-BSI	PCS
10245		BALANCE 15LB	803015	AMESBURY-BSI	PCS
10246		BALANCE 16.5LB	803016	AMESBURY-BSI	PCS
10142		8 X 2 PHIL PAN (4 PER BAG) INSTALL	8N200AXPSZ/4BAG	UNEEDA BOLT	PCS
10271		FOAM WRAP, 3/4 X 1 1/2 X 75 FT, PSA ONE SIDE	WWW-0750X1500X75	SECON RUBBER & PLASTICS	FT
10132		12" x 6500' MACHINE WINDOW FILM (80 PER SKID)	WIN 12-6500	ULTRA-PAK INCORPORATED	FT
		1/16"x3/4"x3/4" REINFORCEMENT	8245	ASTRO SHAPES	FT
		1/4"x3/4" PART 1003 REINFORCEMENT	8AR	ASTRO SHAPES	FT
		<b>SASH PARTS</b>			
1004-00	1	SASH LOCK RAIL, WHITE	1004-00	QUALITY	FT
1004-10	1	SASH LOCK RAIL, ALMOND	1004-10	QUALITY	FT
1004-40	1	SASH LOCK RAIL, CREAM	1004-40	QUALITY	FT
1002-00	1	SASH HANDLE, WHITE	1002-00	QUALITY	FT
1002-10	1	SASH HANDLE, ALMOND	1002-10	QUALITY	FT
1002-40	1	SASH HANDLE, CREAM	1002-40	QUALITY	FT
1000-00	2	SASH HEIGHT, WHITE	1000-00	QUALITY	FT
1000-10	2	SASH HEIGHT, ALMOND	1000-10	QUALITY	FT
1000-40	2	SASH HEIGHT, CREAM	1000-40	QUALITY	FT
10285	2	PIVOT BAR	23111	AMESBURY	PCS
10199	4	8A X 5/8 PH TRUSS HD 410SS TAP SCREW	06A05PT4H	MERCHANTS FASTENERS CO	PCS
10296		SASH LOCK, SINGLE HUNG, WHITE	600/601-234	LAWRENCE	PCS
10297		SASH LOCK, SINGLE HUNG, ALMOND	AM024N-22	ACTIVE	PCS
10298		SASH LOCK, SINGLE HUNG, CREAM	YW024N-23	ACTIVE	PCS
10293		8A X 5/8 PH FLAT HD WHT, STL ZNC PL TAP SCREW	08A05PFSZWHT	MERCHANTS FASTENERS CO	PCS
10253	1	TILT LATCH, WHITE, LEFT, WELDED, SHARK FIN	BW 015B1X313-L	ACTIVE	PCS
10252	1	TILT LATCH, WHITE, RIGHT, WELDED, SHARK FIN	BW 015B1X313-R	ACTIVE	PCS
10259	1	TILT LATCH, ALMOND, LEFT, WELDED, SHARK FIN	AM 015B1X313-L	ACTIVE	PCS
10258	1	TILT LATCH, ALMOND, RIGHT, WELDED, SHARK FIN	AM 015B1X313-R	ACTIVE	PCS

N.E. P/N	Qty	Description	Vendor P/N	Vendor	U.O.M.
10255	1	TILT LATCH, CREAM, LEFT, WELDED, SHARK FIN	YW 015B1X313-L	ACTIVE	PCS
10254	1	TILT LATCH, CREAM, RIGHT, WELDED, SHARK FIN	YW 015B1X313-R	ACTIVE	PCS
10059		WOOLPILE WHITE, .290 X .187	29018745WHGF	AMESBURY	FT
10179		QET 300-1 BULB VINYL WHITE, 300 X 190	U1233-00000	SCHLEGAL SYSTEMS, INC	FT
		"L" BRACKET 2"x2"		SUMMIT	PCS
		1/16"x3/4"x5/16" REINFORCEMENT	AEROLITE	N5700	FT

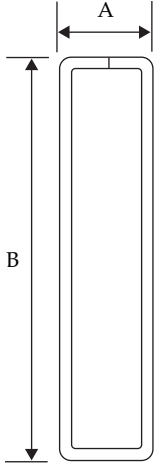
N.E. P/N	Qty	Description	Vendor P/N	Vendor	U.O.M.
		<b>GLASS PARTS</b>			
10100		GLASS, 72 X 84 SSB, CLEAR	1140	AGC	SQ FT
10283		GLASS, 72 X 84 DSB, CLEAR	1456	AGC	SQ FT
10101		GLASS, 72 X 84 SSB, LOW CS36	5343	AGC	SQ FT
10284		GLASS, 48 X 60 OBSCURE	451997	AGC	SQ FT
10190		GLASS, TEMPERED, CLEAR	18CT	GLASS AMERICA	SQ FT
10191		GLASS, TEMPERED, OBSCURE	62DT	GLASS AMERICA	SQ FT
10192		GLASS, TEMPERED, CLEAR LOW E	18LE	GLASS AMERICA	SQ FT
10249		GLASS, 72 X 84 SSB, LOW CS28	003-00	AGC	SQ FT
10329		GLASS, 72 X 84 SSB, LOW CS73	003-01	AGC	SQ FT
10250		GLASS, 72 X 84 SSB, LOW E, 70/36	70/36	GLASS AMERICA	SQ FT
10301		9/16" GRAY DURALITE	824-56H-357	QUANEX	FT
10102		3/16 X .610 WHITE MUNTIN	0415USVBI	RAMAPO	FT
10211		3/16 X .610 TAN MUNTIN	0415USVTAN	RAMAPO	FT
10110		3/16 X 5/8 A CLIPS INTERNAL MUNTIN CROSSES	CRO416IJ	RAMAPO	PCS
10127		GRIDLOC CLIPS 3/16 X 5/8 X 9/16 5000 PCS, 7/8 GLA	318-58GL-580	QUANEX	PCS
10105		8 X 18 WHITE ELISABETH MUNTIN	0818EVBI	RAMAPO	FT
10214		8 X 18 TAN ELISABETH MUNTIN	0818EVBTAN	RAMAPO	FT
10109		8 X 18 WHITE EXTERNAL CROSSES	CRO818E-BI	RAMAPO	PCS
10216		8 X 18 TAN EXTERNAL CROSSES	CRO818E-TAN	RAMAPO	PCS
10107		BAVIERA BRIGHT GOLD PENCIL BAR	BAV-PB-BG	RAMAPO	FT
10108		BAVIERA WHITE PENCIL BAR	BAV-PB-WH	RAMAPO	FT
10106		BAVIERA BRIGHT GOLD NYLON CENTER KEYS	BAV-CK-NY-BG	RAMAPO	PCS
10217		BAVIERA WHITE NYLON CENTER KEYS	BAV-CK-NY-WH	RAMAPO	PCS
10218		BAVIERA BRIGHT GOLD NYLON 90Y	BAV-90Y-NY-BG	RAMAPO	PCS
10219		BAVIERA WHITE NYLON 90Y	BAV-90Y-NY-BI	RAMAPO	PCS



## Muntin Bar

Aluminum: Painted, Mill Finish, Clear & Color In™ Anodized

	Report #:	M2621-116-45
	Date:	11/10/21
	Verified by:	William M. Ford



**TOLERANCE**  
 A, ± .005 (.127mm)  
 B, ± .005 (.127mm)

**SPECIAL NOTICE**  
**Cleaning and Handling of Muntin Bar**

We recommend muntin bar to be wiped clean before installation into an insulating glass unit. A household grade liquid cleaner may be used for this purpose.

To avoid breakdown of painted surfaces, do not use M.E.K., Triethane, Alcohol or like substances for the cleaning of painted muntin bar.

When machining and processing muntin bar in your plant, keep saw tables and work areas free of saw cut filings to avoid scratching the painted surfaces.

Packaging Information			
Muntin Bar Size	Part #	Pieces Per Shipping Carton 12' 8" Lengths	Lineal Feet Per Shipping Carton 12' 8" Lengths
1/8 x .610	219697	200	2533
3/16 x 9/16†	119320	150	1900
3/16 x .610†	119705	125	1583
3/16 x 5/8†	120874	125	1583
3/16 x 3/4	122909	110	1393
3/16 x 13/16	123618	110	1393
3/16 x 1	123823	85	1076
1/4 x 9/16	119427	135	1710
1/4 x 5/8†	121410	120	1520
1/4 x 3/4	123063	95	1203
1/4 x 13/16	215017	95	1203
1/4 x 1	123836	70	887
1/4 x 1 1/4	123856	51	646
5/16 x 1	210318	60	684
3/8 x 5/8	121468	90	1140
3/8 x 3/4	123088	75	950
3/8 x 13/16	215016	70	887
3/8 x 7/8	123797	55	697
3/8 x 1	201968	55	696
3/8(.375) x 3/8	205591	140	1773
7/16 x 3/8	119016	115	1457
7/16 x 3/8	216500**	115	1457
7/16 x 1/2	213045	88	1115
7/16 x 5/8 <sup>Δ</sup>	214621	65	823
1/2 x 3/4*	201043	50	633
1/2 x 1	203710	40	506

Specification In Inches		
Muntin Bar Size	A	B
1/8 x .610	.125	.610
3/16 x 9/16†	.187	.551
3/16 x .610†	.187	.610
3/16 x 5/8†	.187	.630
3/16 x 3/4†	.187	.775
3/16 x 13/16†	.187	.801
3/16 x 1	.187	1.000
1/4 x 9/16	.235	.562
1/4 x 5/8†	.235	.625
1/4 x 3/4	.235	.765
1/4 x 13/16	.235	.801
1/4 x 1	.235	1.000
1/4 x 1 1/4	.235	1.250
5/16 x 1	.312	1.000
3/8 x 5/8†	.325	.625
3/8 x 3/4	.325	.750
3/8 x 13/16	.325	.801
3/8 x 7/8	.325	.875
3/8 x 1	.325	1.000
3/8(.375) x 3/8	.375	.375
7/16 x 3/8	.438	.375
7/16 x 3/8	.438	.375
7/16 x 1/2	.438	.500
7/16 x 5/8 <sup>Δ</sup>	.438	.625
1/2 x 3/4*	.500	.750
1/2 x 1	.500	1.000

Part numbers shown are standard white color.

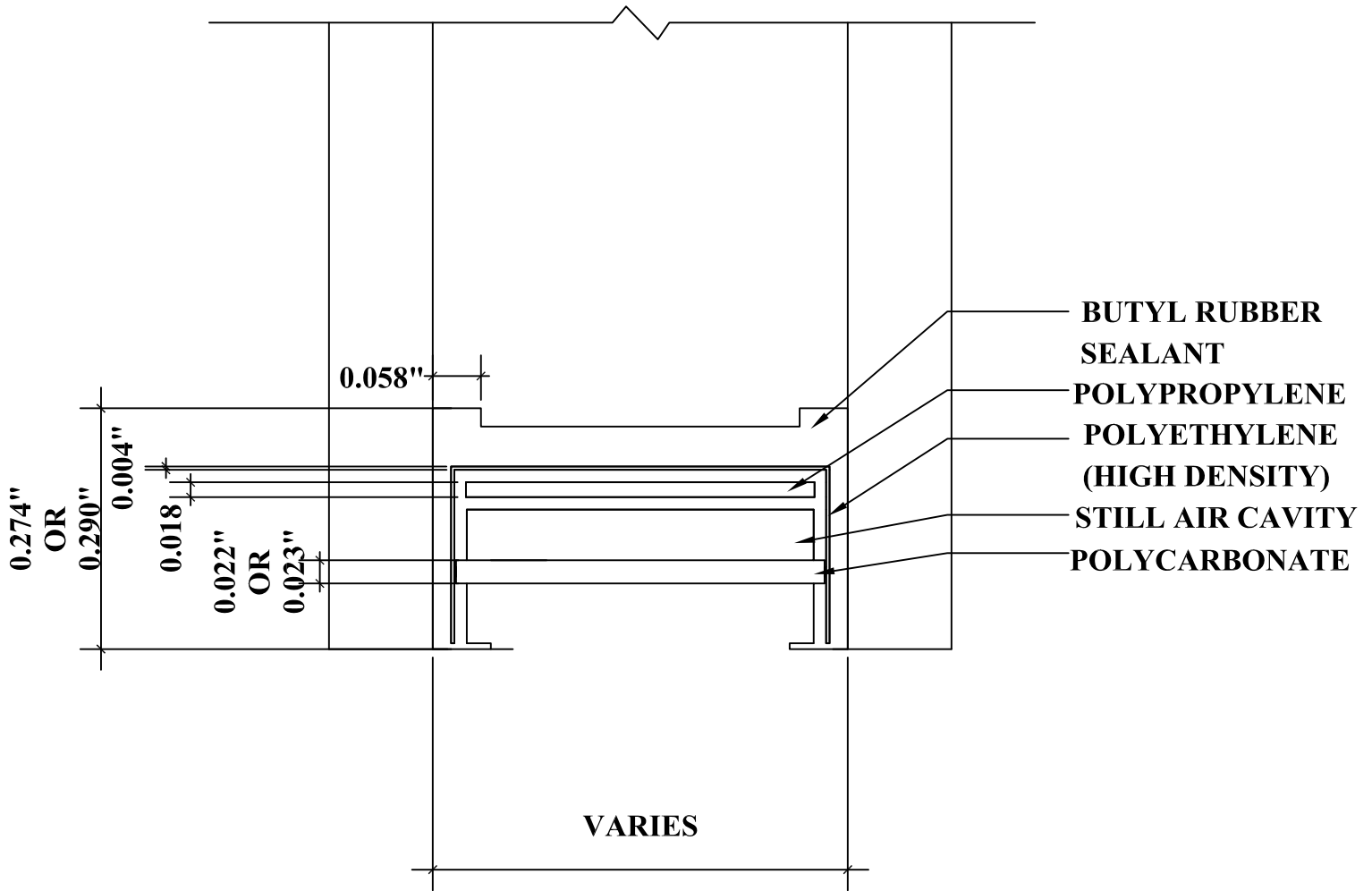
Material thickness: .0185

† Available in tutone. Please see Color Selection Chart located in front of catalog.

Δ Part number shown is Dark Bronze Anodized Color.

\* Part number shown is Clear Anodized. \*\*Part number shown is white welded.

Note: Available in pre-cut lengths and pre-notched; tutone and post-painted. Custom colors also available.



DETAIL FOR THERMAL MODELING OF  
QUANEX DURALITE SPACER (P1-S)





Total Quality. Assured.

130 Derry Court  
York, Pennsylvania 17406

Telephone: 717-764-7700  
Facsimile: 717-764-4129  
www.intertek.com/building

**TEST REPORT FOR NORTH EAST WINDOWS USA, INC.**

Report No: M2621.01-116-45 R0

Date: 08/23/21

**SECTION 8**

**REVISION LOG**

REVISION #	DATE	PAGES	REVISION
.01R0	08/23/21	N/A	Original report issue.

---